



## 夹紧气缸 CPL40

### Pneumatic clamp CPL40

#### 主要特点:

- 铝制外壳
- 曲柄连杆原理
- 打开角度容易调整
- 顶部检测销检测最终位置
- 多种铁制和铝制夹臂可选 V 型和 H 型
- 4 个安装面（前后和两侧）
- 气缸缸径：40 mm
- 2 个 G1/8" 气源接口
- 电感式接近开关（M12x1 接口）
- 带手动机构可选



#### Main characteristics:

- Aluminum flanks
- Toggle action mechanism
- Opening angle easily adjustable
- Checking pin for verifying the end position
- Versatile iron steel and aluminum arms V and H
- 4 mounting areas (front, back, on the sides)
- Pneumatic cylinder bore: 40 mm
- 2 feeding ports G1/8"
- Inductive proximity switch (connection M12x1)
- Hand lever



[PDF](#)



[3D Step](#)



[Index](#)

#### 索引. Index.

页码 Page	描述 Description
1	主要特点 / Main characteristics
2	订货举例 / Ordering example
3 - 4	尺寸 Dimensional page
5 - 6	
7 - 8	
9 - 10	
11 - 12	
13 - 14	
15 - 16	
17 - 18	
19 - 20	
21 - 22	
23 - 24	
25 - 26	
27	
28	M12 电感式接近开关 M12 Inductive proximity switch
	气路图 / Pneumatic plan
29	使用说明 Operating instructions
30	打开角度可调 Opening angle change
	备件 i / Spare parts
31	备注 / Notes



## 订货举例.

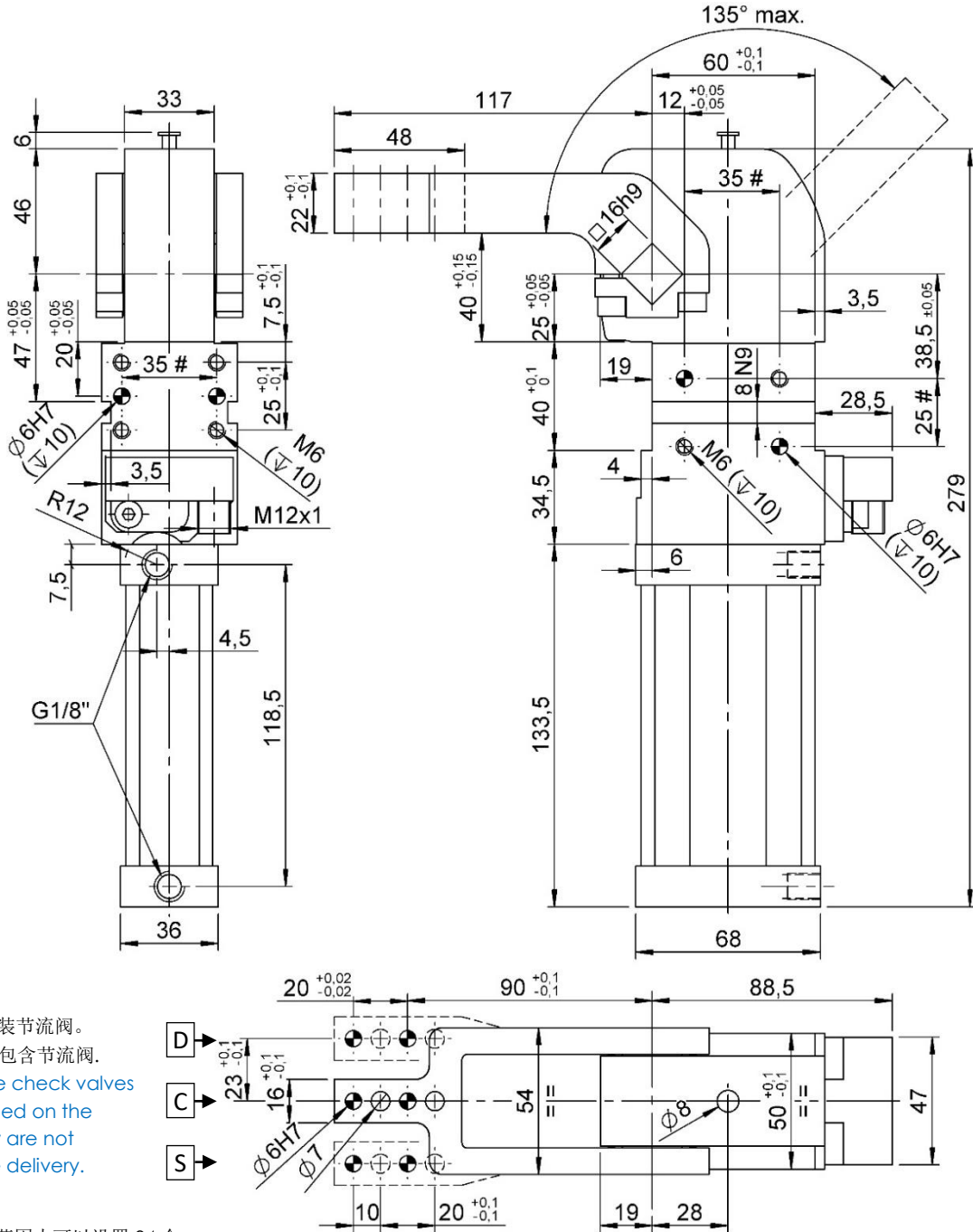
## Ordering example.

CPL40	LA	V1C	I1	G	-	107																																																																																												
<p><b>产品型号和气缸缸径:</b> <b>Model and cylinder bore</b> <b>CPL40</b> 标准夹紧气缸 CPL 缸径 Ø40mm standard clamp CPL cylinder bore Ø40mm</p> <p><b>CPLM40</b> 标准夹紧气缸 CPL 带手动机构 缸径 Ø40mm standard clamp CPL with hand lever cylinder bore Ø40mm</p> 	<p><b>手柄位置:</b> (只适用于 CPLM40) <b>Hand lever position:</b> (specify only for CPLM40)</p> <p><b>LX:</b> 手柄原配位置 lever arrangement</p> <p><b>LA:</b> 手柄在左侧 left lever</p> <p><b>LB:</b> 手柄在右侧 right lever</p> 	<p><b>接近开关:</b> <b>Proximity switch:</b></p> <p><b>X:</b> 无接近开关 without proximity switch</p> <p><b>I1:</b> VEP 标准电感式接近开关 (0°) inductive proximity switch VEP standard (0°)</p> <p><b>I2:</b> VEP 标准电感式接近开关 (90°) inductive proximity switch VEP standard (90°)</p> 	<p><b>调整打开角度:</b> <b>Adjustable opening angle:</b></p> <table border="1" style="width: 100%; border-collapse: collapse;"> <thead> <tr style="background-color: #0070C0; color: white;"> <th rowspan="2">类型 Type</th> <th colspan="3">CPL40</th> <th colspan="3">CPLM40</th> </tr> <tr style="background-color: #0070C0; color: white;"> <th>从 from</th> <th>至 to</th> <th>标准</th> <th>从 from</th> <th>至 to</th> <th>标准</th> </tr> </thead> <tbody> <tr> <td>V1...</td> <td>2°</td> <td>135°</td> <td>122°</td> <td>2°</td> <td>108°</td> <td>108°</td> </tr> <tr> <td>V2...</td> <td>2°</td> <td>103°</td> <td>103°</td> <td>2°</td> <td>103°</td> <td>103°</td> </tr> <tr> <td>H1...</td> <td>2°</td> <td>122°</td> <td>122°</td> <td>2°</td> <td>108°</td> <td>108°</td> </tr> <tr> <td>H2...</td> <td>2°</td> <td>108°</td> <td>108°</td> <td>2°</td> <td>31°</td> <td>31°</td> </tr> <tr> <td>H3...</td> <td>2°</td> <td>135°</td> <td>122°</td> <td>2°</td> <td>19°</td> <td>19°</td> </tr> <tr> <td>V1...S</td> <td>2°</td> <td>31°</td> <td>31°</td> <td>2°</td> <td>57°</td> <td>57°</td> </tr> <tr> <td>V2...S</td> <td>2°</td> <td>19°</td> <td>19°</td> <td>2°</td> <td>45°</td> <td>45°</td> </tr> <tr> <td>V3...S</td> <td>2°</td> <td>57°</td> <td>57°</td> <td>2°</td> <td>91°</td> <td>91°</td> </tr> <tr> <td>H1...S</td> <td>2°</td> <td>45°</td> <td>45°</td> <td>2°</td> <td>16°</td> <td>16°</td> </tr> <tr> <td>H2...S</td> <td>2°</td> <td>91°</td> <td>91°</td> <td></td> <td></td> <td></td> </tr> <tr> <td>H3...S</td> <td>2°</td> <td>16°</td> <td>16°</td> <td></td> <td></td> <td></td> </tr> </tbody> </table> <p>如未标明，气缸将按标准角度供货。 If not indicated, the clamp will be provided with the standard opening angle.</p>				类型 Type	CPL40			CPLM40			从 from	至 to	标准	从 from	至 to	标准	V1...	2°	135°	122°	2°	108°	108°	V2...	2°	103°	103°	2°	103°	103°	H1...	2°	122°	122°	2°	108°	108°	H2...	2°	108°	108°	2°	31°	31°	H3...	2°	135°	122°	2°	19°	19°	V1...S	2°	31°	31°	2°	57°	57°	V2...S	2°	19°	19°	2°	45°	45°	V3...S	2°	57°	57°	2°	91°	91°	H1...S	2°	45°	45°	2°	16°	16°	H2...S	2°	91°	91°				H3...S	2°	16°	16°				<p><b>夹臂类型:</b> <b>Type of arm:</b></p> <p><b>XXX:</b> senza leva / without arm</p> <p><b>V1C, V1D e V1S</b> (vedere pag.3) (see page 3)</p> <p><b>H1C, H1D e H1S</b> (vedere pag.4) (see page 4)</p> <p><b>V1CS, V1DS e V1SS</b> (vedere pag.5) (see page 5)</p> <p><b>H1CS, H1DS e H1SS</b> (vedere pag.6) (see page 6)</p> <p><b>V2C, V2D e V2S</b> (vedere pag.7) (see page 7)</p> <p><b>H2C, H2D e H2S</b> (vedere pag.8) (see page 8)</p> <p><b>V2CS, V2DS e V2SS</b> (vedere pag.9) (see page 9)</p> <p><b>H2CS, H2DS e H2SS</b> (vedere pag.10) (see page 10)</p> <p><b>V3C, V3D e V3S</b> (vedere pag. 11) (see page 11)</p> <p><b>H3C, H3D e H3S</b> (vedere pag.12) (see page 12)</p> <p><b>V3CS, V3DS e V3SS</b> (vedere pag.13) (see page 13)</p> <p><b>H3CS, H3DS e H3SS</b> (vedere pag.14) (see page 14)</p>  <p>备注：可以通过调整夹臂的安装方向把夹臂 V 改成 H。 <b>NOTE:</b> It's possible to transform the clamp type V... into the type H... simply changing the arm position.</p>	<p><b>气源接口类型:</b> <b>Feeding ports type:</b></p> <p><b>G:</b> 接口 G 1/8" ports type G 1/8"</p> <p><b>N:</b> 接口 1/8" NPT ports type 1/8" NPT</p> 
类型 Type	CPL40			CPLM40																																																																																														
	从 from	至 to	标准	从 from	至 to	标准																																																																																												
V1...	2°	135°	122°	2°	108°	108°																																																																																												
V2...	2°	103°	103°	2°	103°	103°																																																																																												
H1...	2°	122°	122°	2°	108°	108°																																																																																												
H2...	2°	108°	108°	2°	31°	31°																																																																																												
H3...	2°	135°	122°	2°	19°	19°																																																																																												
V1...S	2°	31°	31°	2°	57°	57°																																																																																												
V2...S	2°	19°	19°	2°	45°	45°																																																																																												
V3...S	2°	57°	57°	2°	91°	91°																																																																																												
H1...S	2°	45°	45°	2°	16°	16°																																																																																												
H2...S	2°	91°	91°																																																																																															
H3...S	2°	16°	16°																																																																																															



## CPL40 V1...

夹紧气缸 D.40, 打开角度可调, 垂直安装, 夹高度 15mm  
 Clamp, D.40, Vario Op. Angle, Vertical arm, Offset 15



气缸外部必须安装节流阀。  
 VEP 供应气缸不包含节流阀。  
 External throttle check valves must be provided on the assembly. They are not included in the delivery.

标准打开角度：  
 在 2° -135°可调范围内可以设置 34 个角度位置。

Standard opening angles:  
 settable in 34 different positions in a range between 2° and 135°.

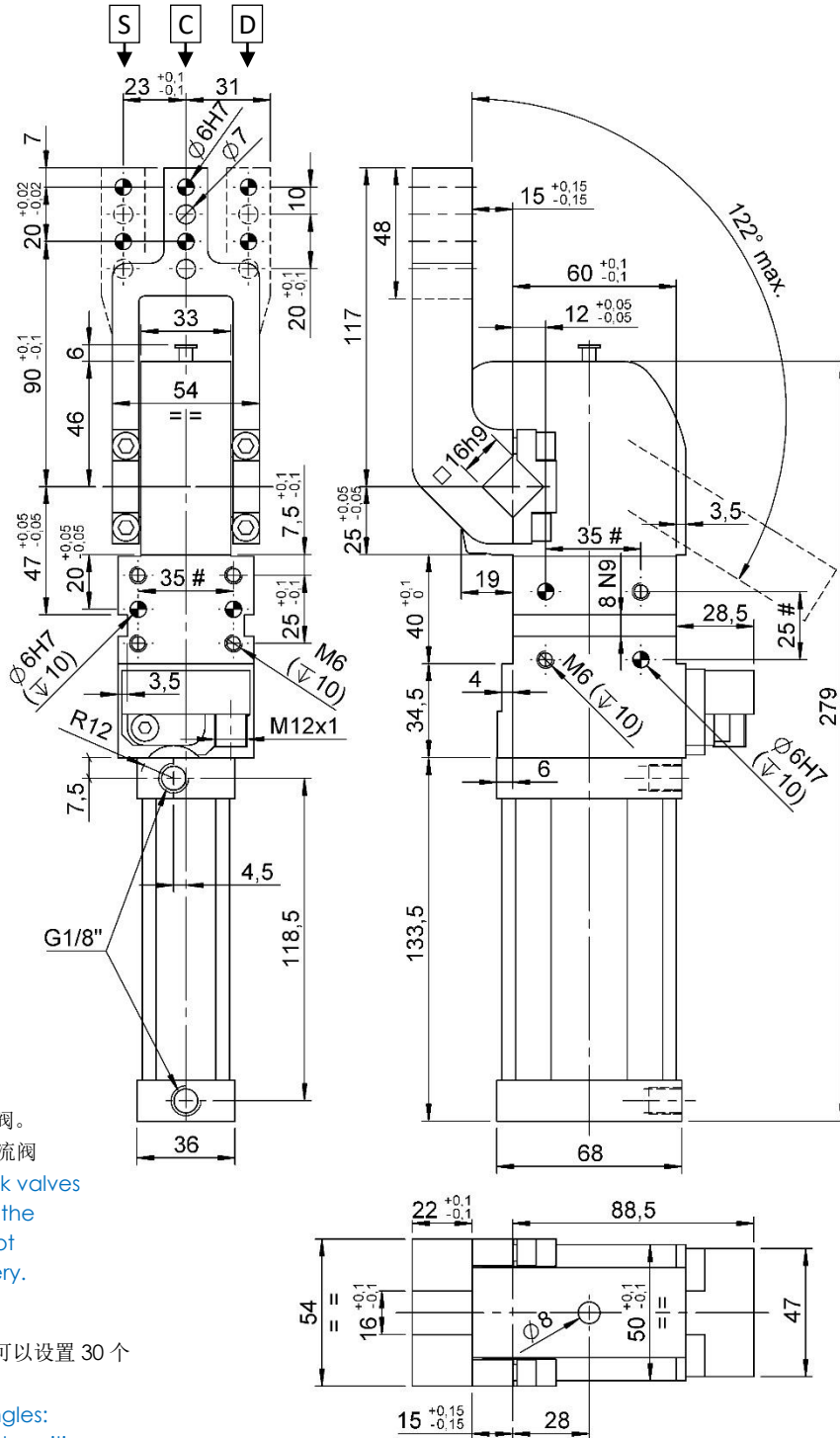
# 公差: 定位销孔  $\pm 0.02$ , 螺纹孔  $\pm 0.1$   
 # Tolerances: dowel holes  $\pm 0.02$ , screw holes  $\pm 0.1$

类型 Type	缸径 Cylinder bore	保持力 Holding moment	重量 Weight	工作气压 Working pressure	最大夹紧扭矩 Clamping max. torque (5 bar)	耗气量 Air consumption (5 bar)
	[ mm ]	[ Nm ]	[ Kg ]	[ bar ]	[ Nm ]	[ l ]
CPL40 V1...	40	380	~ 2,3	3 - 7	140	~ 1,0



## CPL40 H1...

夹紧气缸 D.40, 打开角度可调, 夹臂水平安装, 高度 15mm  
 Clamp, D.40, Vario Op. Angle, Horizontal arm, Offset 15



气缸外部必须安装节流阀。  
 VEP 供应气缸不包含节流阀  
 External throttle check valves  
 must be provided on the  
 assembly. They are not  
 included in the delivery.

标准打开角度：  
 在 2° -122°可调范围内可以设置 30 个  
 角度位置。  
 Standard opening angles:  
 settable in 30 different  
 positions  
 in a range between 2° and 122°.

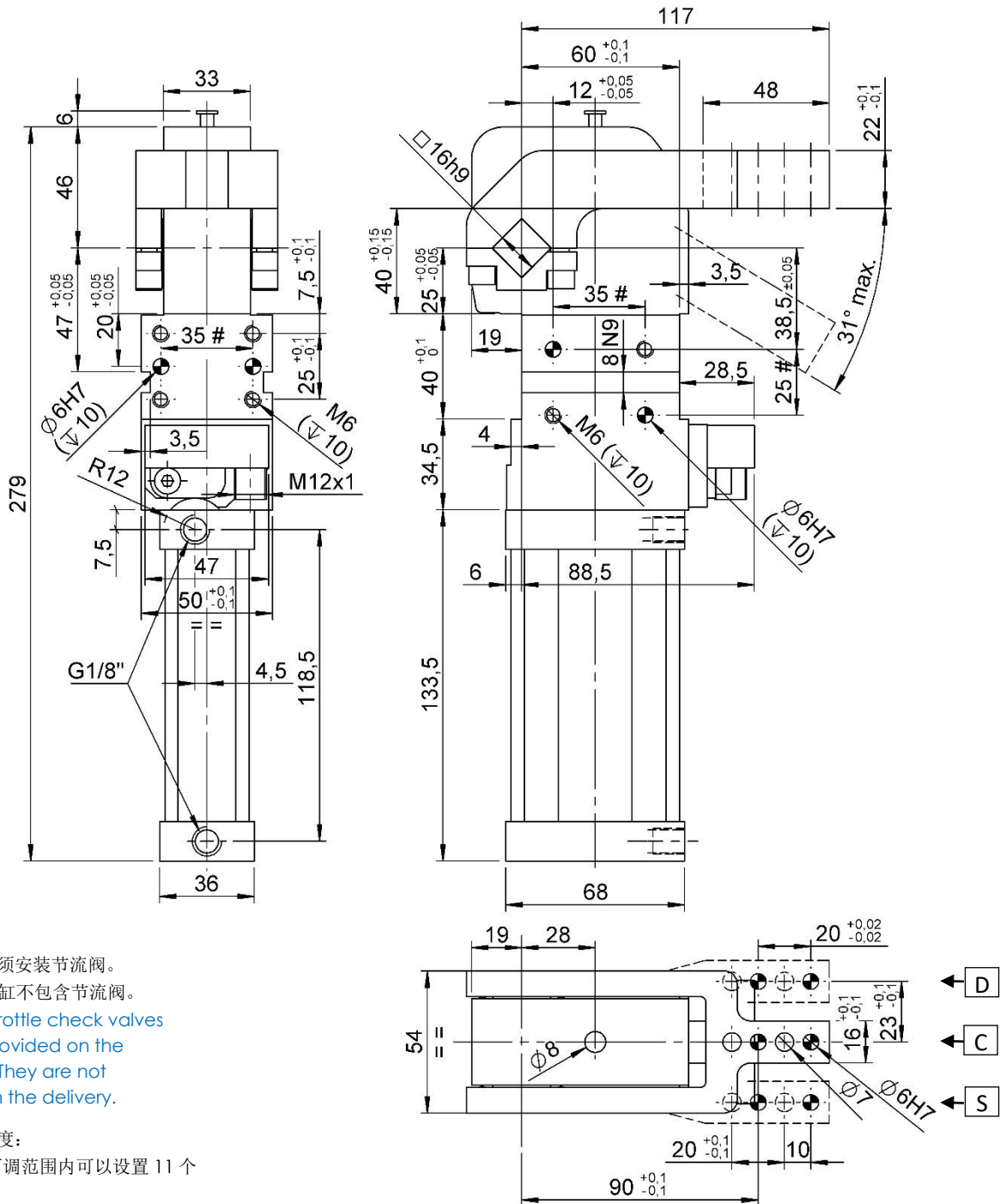
#公差: 定位销孔 ±0.02, 螺纹孔 ±0.1  
 #Tolerances: dowel holes ±0.02, screw holes ±0.1

类型 Type	缸径 Cylinder bore	保持力 Holding moment	重量 Weight	工作气压 Working pressure	最大夹紧扭矩 Clamping max. torque (5 bar)	耗气量 Air consumption (5 bar)
	[ mm ]	[ Nm ]	[ Kg ]	[ bar ]	[ Nm ]	[ l ]
CPL40 H1...	40	380	~ 2,3	3 - 7	140	~ 1,0



## CPL40 V1...S

夹紧气缸, D.40, 打开角度可调, 夹臂垂直对称安装, 高度 15mm  
 Clamp, D.40, Vario Op. Angle, Vertical symmetric arm, Offset 15



气缸外部必须安装节流阀。  
 VEP 供应气缸不包含节流阀。

External throttle check valves must be provided on the assembly. They are not included in the delivery.

标准打开角度:

在 2° -31°可调范围内可以设置 11 个角度位置。

Standard opening angles: settable in 11 different positions in a range between 2° and 31°.

# 公差: 定位销孔 ±0.02, 螺纹孔 ±0.1

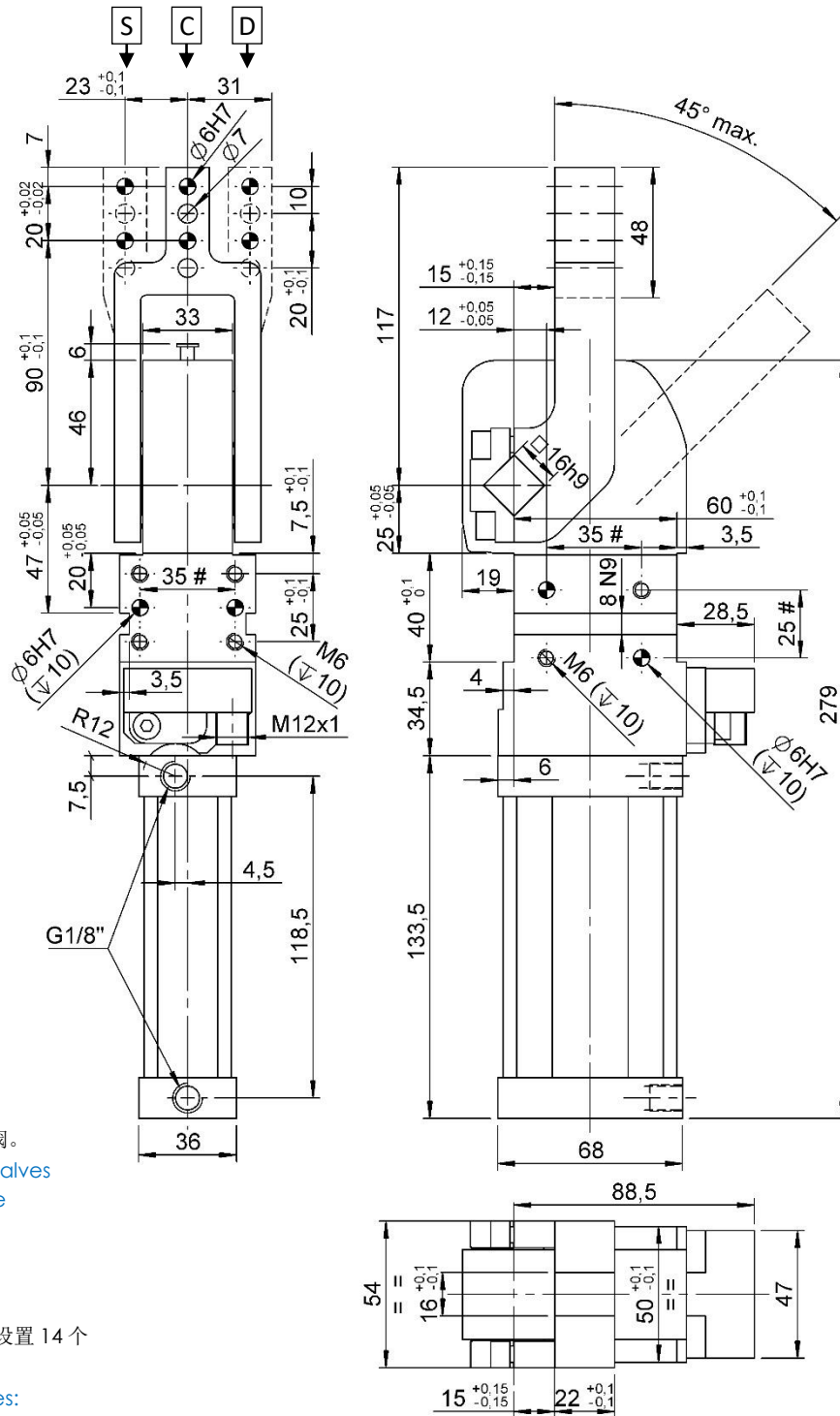
#Tolerances: dowel holes: ±0.02 | screw holes: ±0.1

类型 Type	缸径 Cylinder bore	保持力 Holding moment	重量 Weight	工作气压 Working pressure	最大夹紧扭矩 Clamping max. torque (5 bar)	耗气量 Air consumption (5 bar)
	[ mm ]	[ Nm ]	[ Kg ]	[ bar ]	[ Nm ]	[ l ]
CPL40 V1...S	40	380	~ 2,3	3 - 7	140	~ 0,6



## CPL40 H1...S

夹紧气缸, D.40, 打开角度可调, 夹臂水平对称安装, 高度 15mm  
 Clamp, D.40, Vario Op. Angle, Horizontal symmetric arm, Offset 15



气缸外部必须安装节流阀。  
 VEP 供应气缸不包含节流阀。  
 External throttle check valves must be provided on the assembly. They are not included in the delivery.

标准打开角度：  
 在 2° -45° 可调范围内可以设置 14 个角度位置。

Standard opening angles:  
 settable in 14 different positions in a range between 2° and 45°.

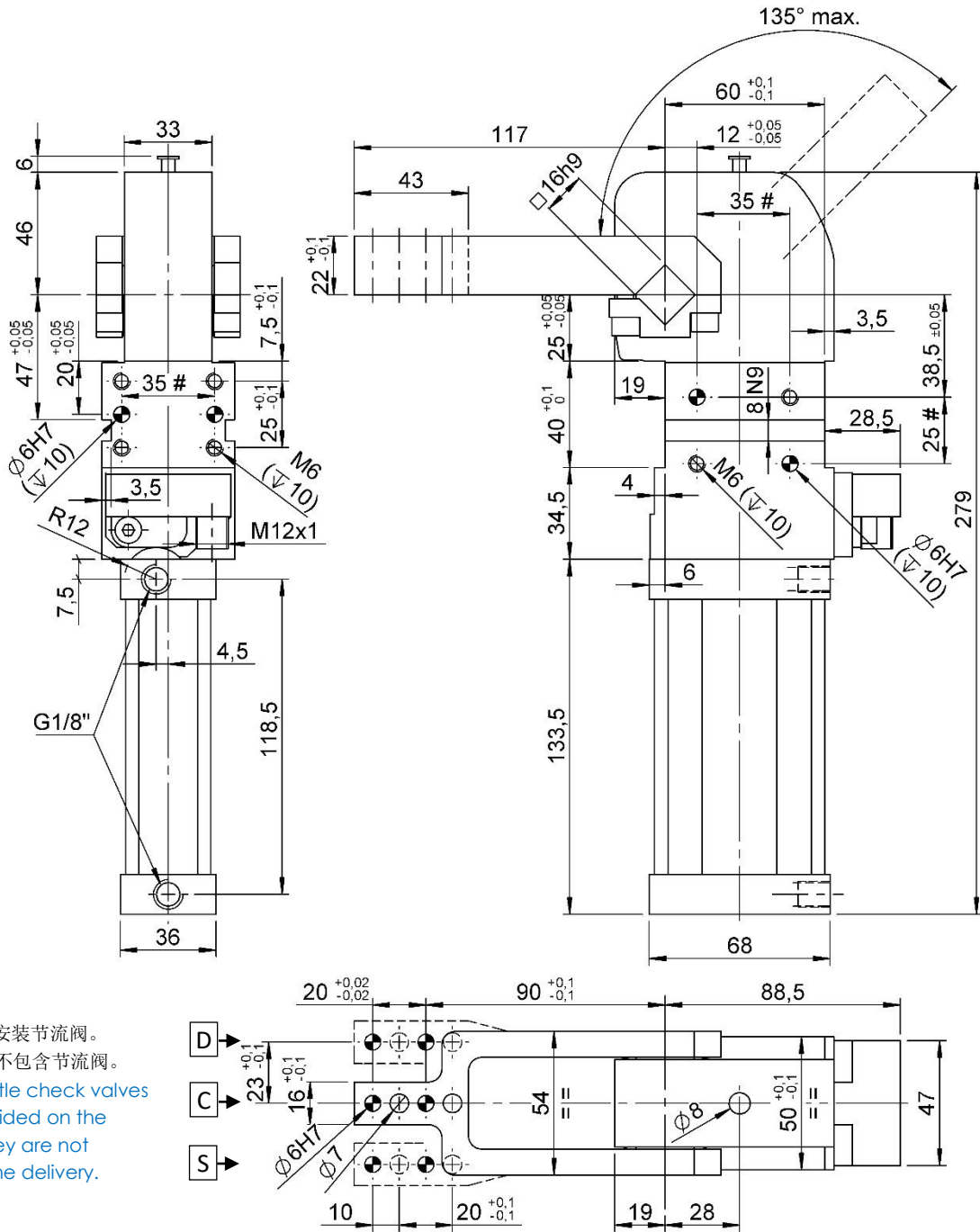
#公差: 定位销孔 ±0.02, 螺纹孔 ±0.1  
 #Tolerances: dowel holes ±0.02, screw holes ±0.1

类型 Type	缸径 Cylinder bore	保持力 Holding moment	重量 Weight	工作气压 Working pressure	最大夹紧扭矩 Clamping max. torque (5 bar)	耗气量 Air consumption (5 bar)
	[ mm ]	[ Nm ]	[ Kg ]	[ bar ]	[ Nm ]	[ l ]
CPL40 H1...S	40	380	~ 2,3	3 - 7	140	~ 0,7



## CPL40 V2...

夹紧气缸, D.40, 打开角度可调, 夹臂垂直安装, 夹臂高度 0mm  
 Clamp, D.40, Vario Op. Angle, Vertical arm, Offset 0



气缸外部必须安装节流阀。  
 VEP 供应气缸不包含节流阀。  
 External throttle check valves must be provided on the assembly. They are not included in the delivery.

标准打开角度：  
 在 2° -135° 可调范围内可以设置 34 个角度位置。

Standard opening angles:  
 settable in 34 different positions  
 in a range between 2° and 135°.

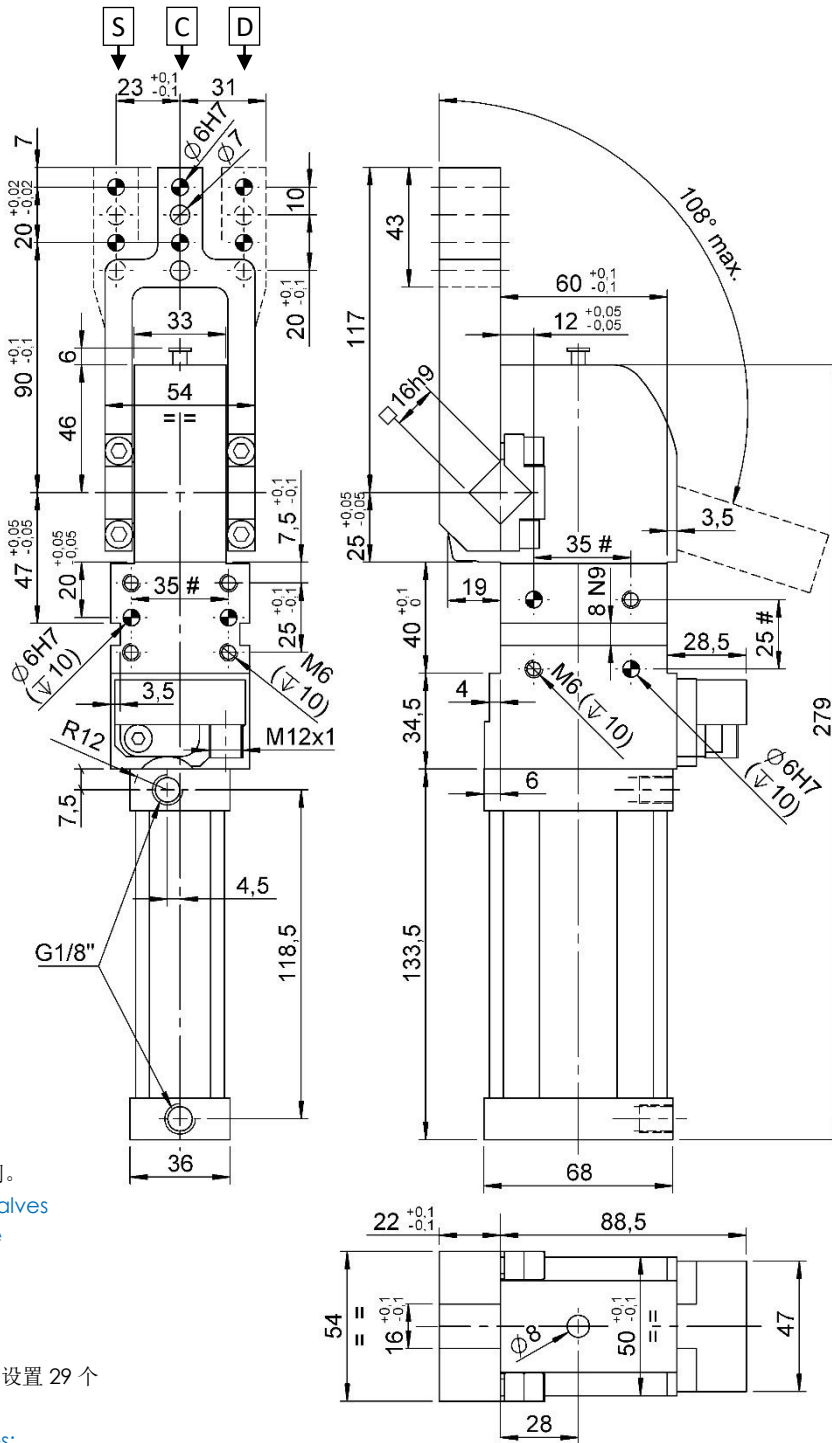
# 公差: 定位销孔 ±0.02, 螺纹孔 ±0.1  
 # Tolerances: dowel holes ±0.02, screw holes ±0.1

类型 Type	缸径 Cylinder bore	保持力 Holding moment	重量 Weight	工作气压 Working pressure	最大夹紧扭矩 Clamping max. torque (5 bar)	耗气量 Air consumption (5 bar)
	[ mm ]	[ Nm ]	[ Kg ]	[ bar ]	[ Nm ]	[ l ]
CPL40 V2...	40	380	~ 2,2	3 - 7	140	~ 1,0



## CPL40 H2...

夹紧气缸, D.40, 打开角度可调, 夹臂水平安装, 夹高度 0mm  
 Clamp, D.40, Vario Op. Angle, Horizontal arm, Offset 0



气缸外部必须安装节流阀。  
 VEP 供应气缸不包含节流阀。

External throttle check valves must be provided on the assembly. They are not included in the delivery.

标准打开角度:

在 2° -108°可调范围内可以设置 29 个角度位置。

Standard opening angles:

settable in 29 different positions in a range between 2° and 108°.

#公差: 定位销孔 ±0.02, 螺纹孔 ±0.1

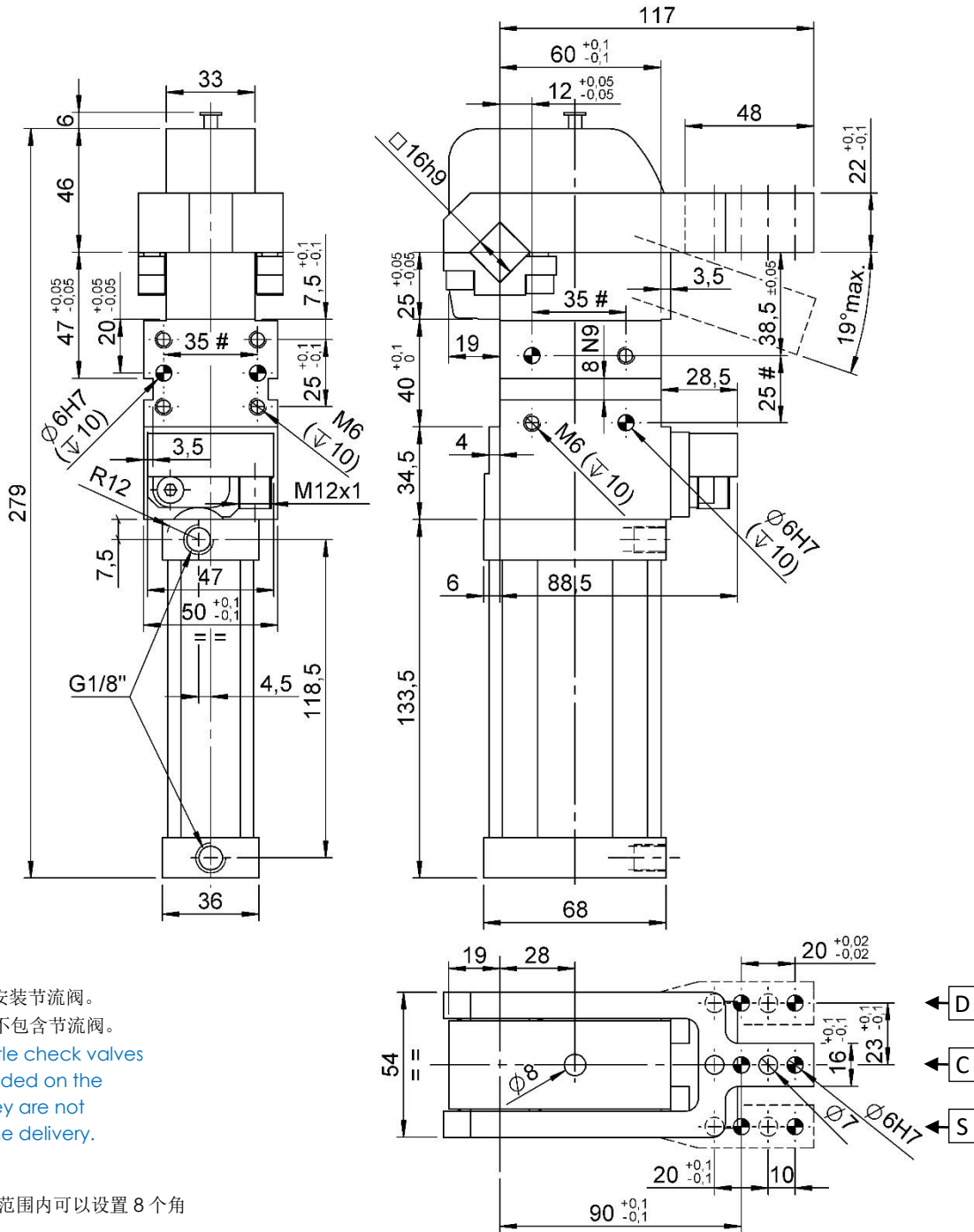
#Tolerances: dowel holes ±0.02, screw holes ±0.1

类型 Type	A 缸径 Cylinder bore	保持力 Holding moment	重量 Weight	工作气压 Working pressure	最大夹紧扭矩 Clamping max. torque (5 bar)	耗气量 Air consumption (5 bar)
	[ mm ]	[ Nm ]	[ Kg ]	[ bar ]	[ Nm ]	[ l ]
CPL40 H2...	40	380	~ 2,2	3 - 7	140	~ 1,0



## CPL40 V2...S

夹紧气缸, D.40, 打开角度可调, 夹臂垂直对称安装, 夹臂高度 0mm  
 Clamp, D.40, Vario Op. Angle, Vertical symmetric arm, Offset 0



气缸外部必须安装节流阀。  
 VEP 供应气缸不包含节流阀。  
 External throttle check valves must be provided on the assembly. They are not included in the delivery.

标准打开角度：  
 在 2° -19°可调范围内可以设置 8 个角度位置。

Standard opening angles:  
 settable in 8 different positions in a range between 2° and 19°.

# 公差: 定位销孔 ±0.02, 螺纹孔 ±0.1

#Tolerances: dowel holes: ±0.02 | screw holes: ±0.1

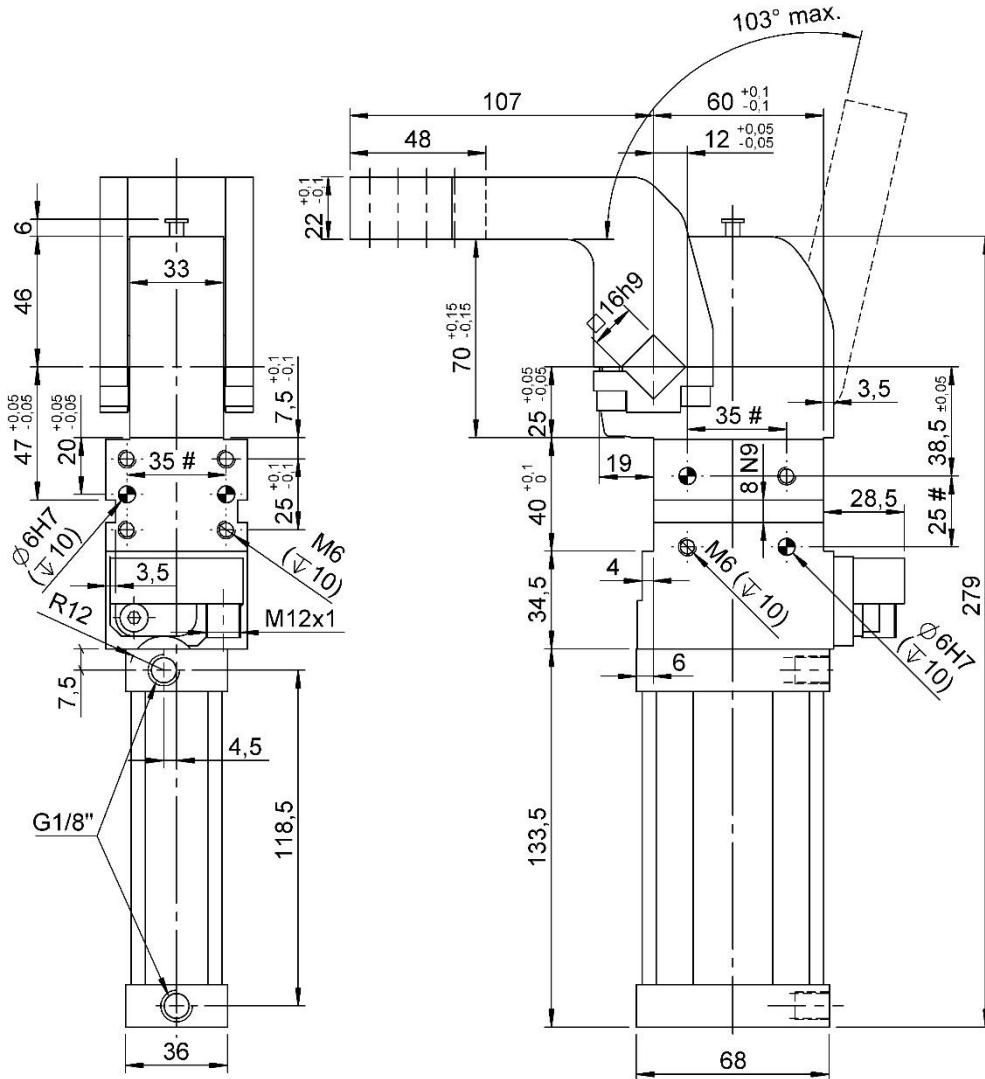
类型 Type	缸径 Cylinder bore	保持力 Holding moment	重量 Weight	工作气压 Working pressure	最大夹紧扭矩 Clamping max. torque (5 bar)	耗气量 Air consumption (5 bar)
	[ mm ]	[ Nm ]	[ Kg ]	[ bar ]	[ Nm ]	[ l ]
CPL40 V2...S	40	380	~ 2,2	3 - 7	140	~ 0,6





## CPL40 V3...

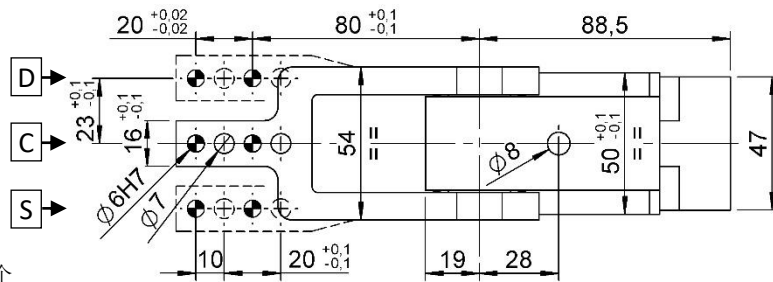
夹紧气缸, D.40, 打开角度可调, 夹臂垂直安装, 夹臂高度 45mm  
 Clamp, D.40, Vario Op. Angle, Vertical arm, Offset 45



气缸外部必须安装节流阀。  
 VEP 供应气缸不包含节流阀。  
 External throttle check valves must be provided on the assembly. They are not included in the delivery.

标准打开角度：  
 在 2°-103°可调范围内可以设置 28 个角度位置。

Standard opening angles:  
 settable in 28 different positions in a range between 2° and 103°.



#公差: 定位销孔 ±0.02, 螺纹孔 ±0.1

#Tolerances: dowel holes ±0.02, screw holes ±0.1

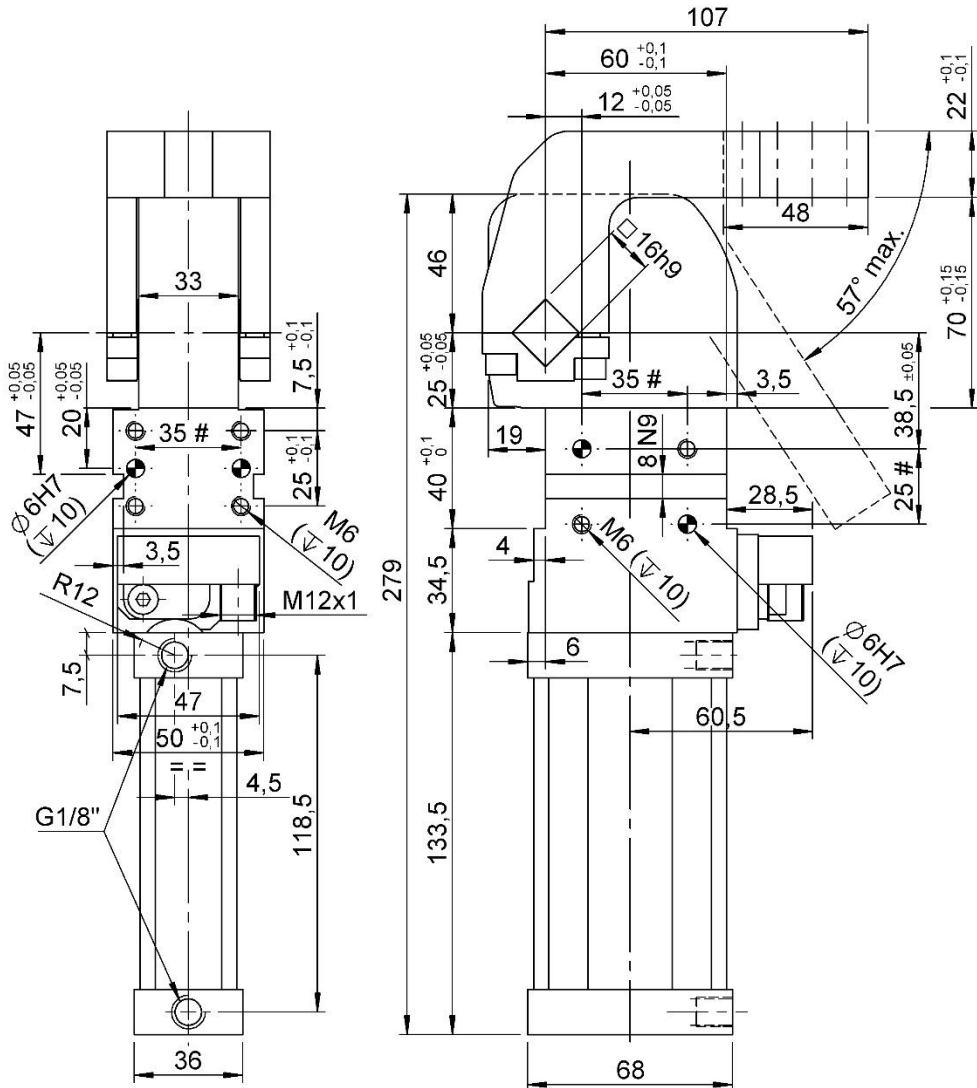
Modello 类型 Type	缸径 Cylinder bore	保持力 Holding moment	重量 Weight	工作气压 Working pressure	最大夹紧扭矩 Clamping max. torque (5 bar)	耗气量 Air consumption (5 bar)
	[ mm ]	[ Nm ]	[ Kg ]	[ bar ]	[ Nm ]	[ l ]
CPL40 V3...	40	380	~ 2,4	3 - 7	140	~ 0,9





## CPL40 V3...S

夹紧气缸, D.40, 打开角度可调, 夹臂垂直对称安装, 夹臂高度 45mm  
 Clamp, D.40, Vario Op. Angle, Vertical symmetric arm, Offset 45



气缸外部必须安装节流阀。  
 VEP 供应气缸不包含节流阀。

External throttle check valves must be provided on the assembly. They are not included in the delivery.

标准打开角度:

在 2° -57°可调范围内可以设置 17 个角度位置。

Standard opening angles:  
 settable in 17 different positions  
 in a range between 2° and 57°.

#公差: 定位销孔 ±0.02, 螺纹孔 ±0.1

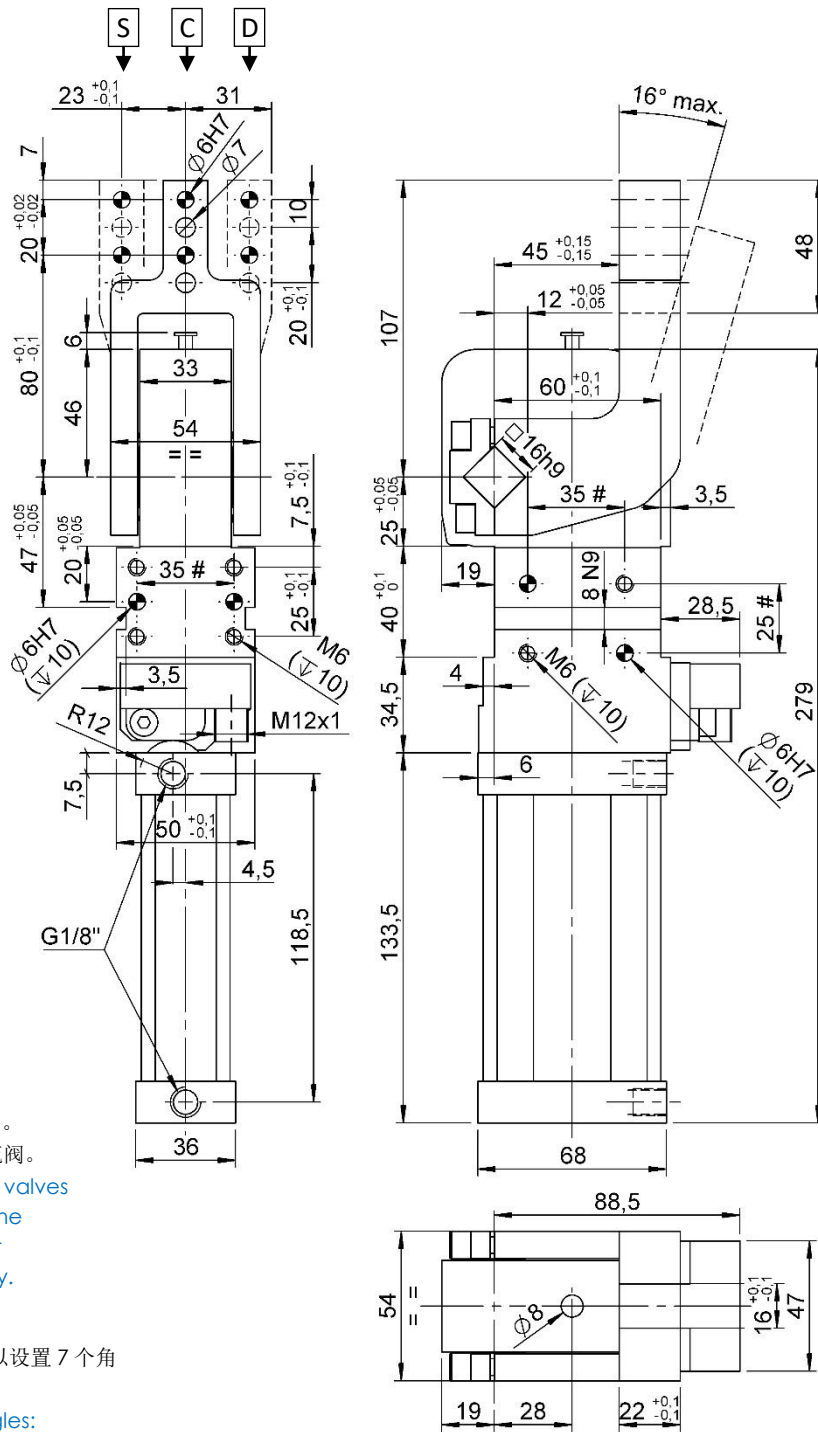
#Tolerances: dowel holes ±0.02, screw holes ±0.1

类型 Type	缸径 Cylinder bore	保持力 Holding moment	重量 Weight	工作压力 Working pressure	最大夹紧扭矩 Clamping max. torque (5 bar)	耗气量 Air consumption (5 bar)
	[ mm ]	[ Nm ]	[ Kg ]	[ bar ]	[ Nm ]	[ l ]
CPL40 V3...S	40	380	~ 2,4	3 - 7	140	~ 0,7



## CPL40 H3...S

夹紧气缸, D.40, 打开角度可调, 夹臂水平对称安装, 夹臂高度 45mm  
Clamp, D.40, Vario Op. Angle, Horizontal symmetric arm, Offset 45



气缸外部必须安装节流阀。  
VEP 供应气缸不包含节流阀。

External throttle check valves must be provided on the assembly. They are not included in the delivery.

标准打开角度:

在 2° -16°可调范围内可以设置 7 个角度位置。

Standard opening angles:

settable in 7 different positions in a range between 2° and 16°.

#公差: 定位销孔 ±0.02, 螺纹孔 ±0.1

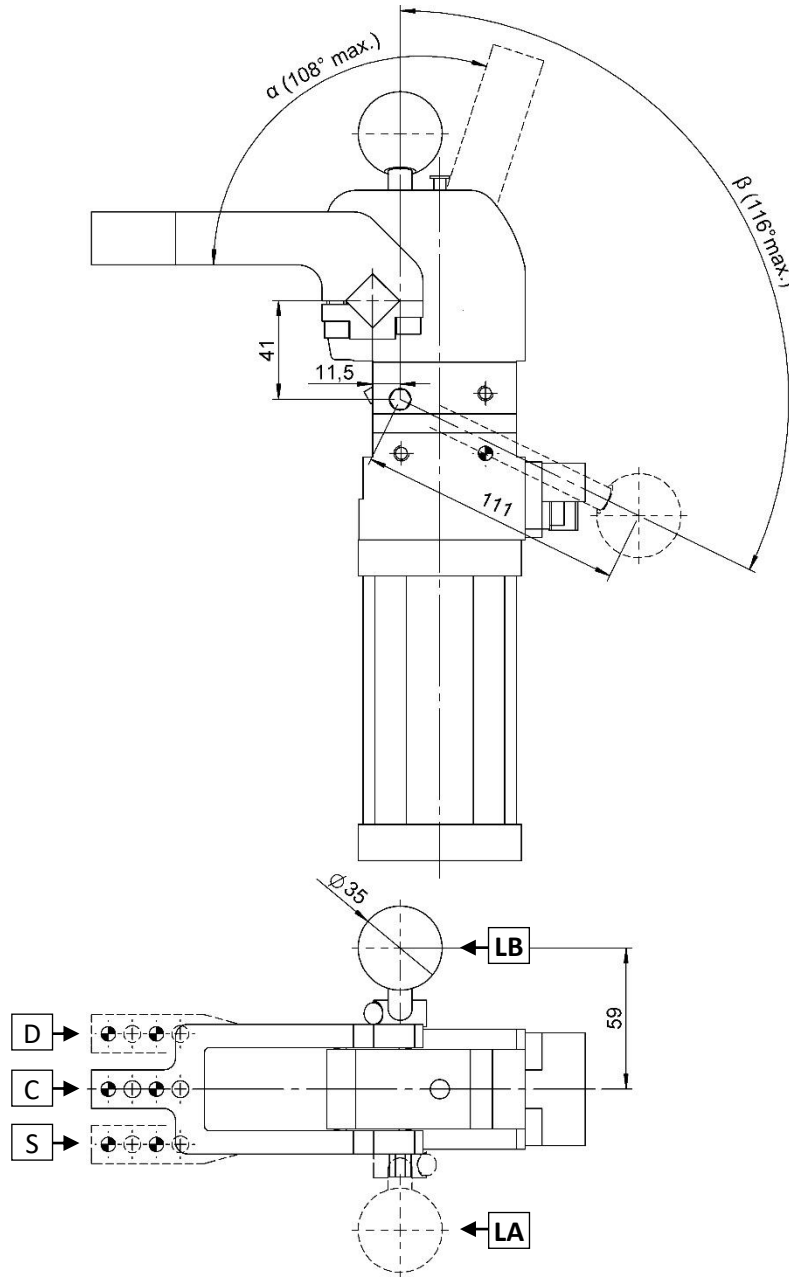
#Tolerances: dowel holes ±0.02, screw holes ±0.1

类型 Type	缸径 Cylinder bore	保持力 Holding moment	重量 Weight	工作气压 Working pressure	最大夹紧扭矩 Clamping max. torque (5 bar)	耗气量 Air consumption (5 bar)
	[ mm ]	[ Nm ]	[ Kg ]	[ bar ]	[ Nm ]	[ l ]
CPL40 H3...S	40	380	~ 2,4	3 - 7	140	~ 0,6



## CPLM40L...V1...

夹紧气缸, D.40, 打开角度可调, 带手动机构, 夹臂垂直安装, 高度 15mm  
 Clamp, D.40, Vario Op. Angle, Hand Lever, Vert. arm, Offset 15



$\alpha$	16°	31°	45°	61°	74°	91°	103°	108°
$\beta$	41°	54°	63°	75°	84°	99°	111°	116°

手柄角度控制按 60°一格调整

Manual control adjustable in steps of 60°

#公差: 定位销孔  $\pm 0.02$ , 螺纹孔  $\pm 0.1$

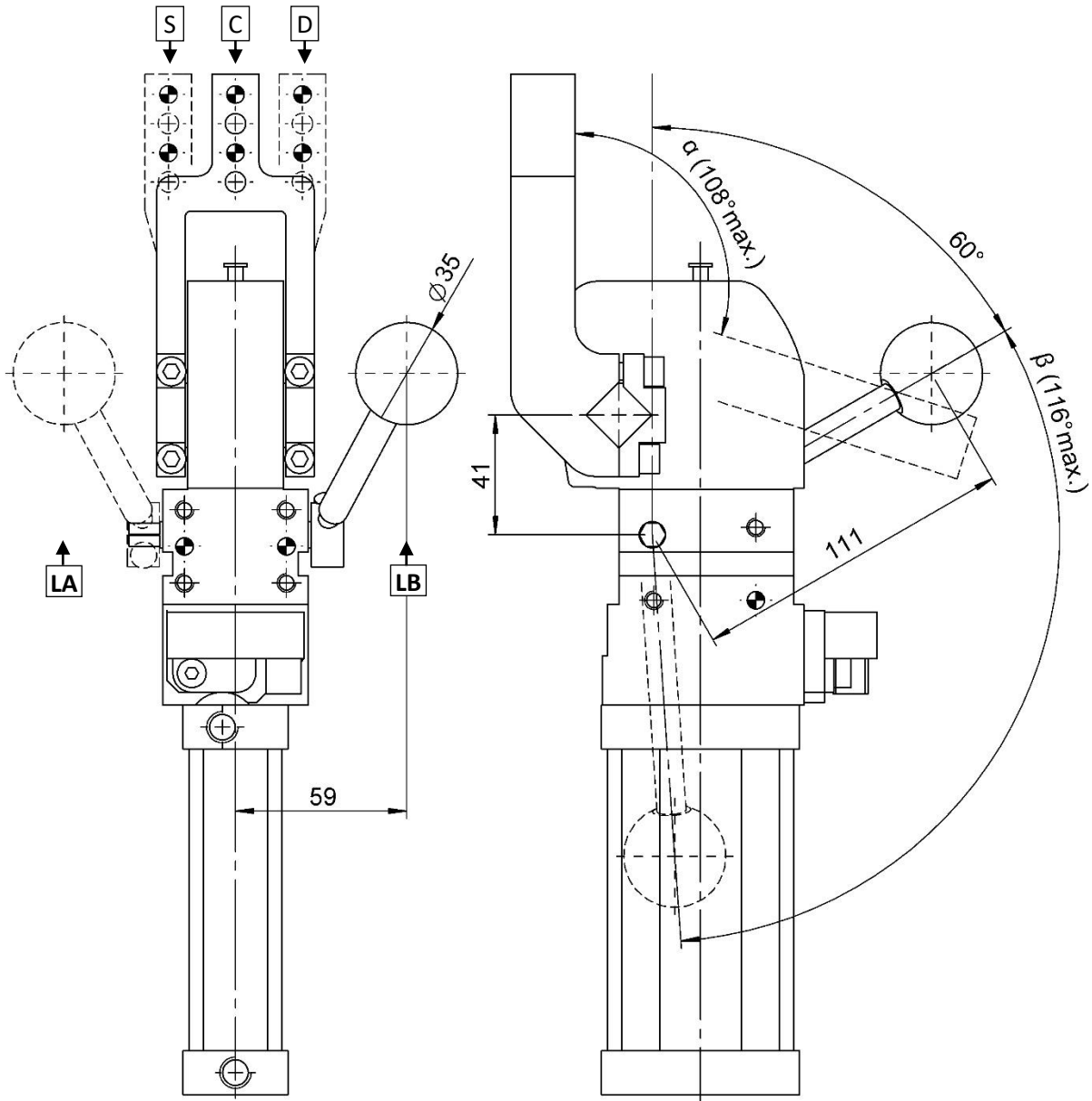
#Tolerances: dowel holes  $\pm 0.02$ , screw holes  $\pm 0.1$

类型 Type	缸径 Cylinder bore	保持力 Holding moment	重量 Weight	工作气压 Working pressure	最大手动推力 Max. manual force
	[ mm ]	[ Nm ]	[ Kg ]	[ bar ]	[ N ]
CPLM40L...V1...	40	380	~ 2,6	3 - 7	200



## CPLM40L...H1...

夹紧气缸, D.40, 打开角度可调, 带手动机构, 夹臂水平安装, 高度 15mm  
 Clamp, D.40, Vario Op. Angle, Hand Lever, Horiz. Arm, Offset 15



<b>α</b>	16°	31°	45°	61°	74°	91°	108°
<b>β</b>	41°	54°	63°	75°	84°	99°	116°

手柄角度控制按 60°一格调整

Manual control adjustable in steps of 60°

#公差: 定位销孔 ±0.02, 螺纹孔 ±0.1

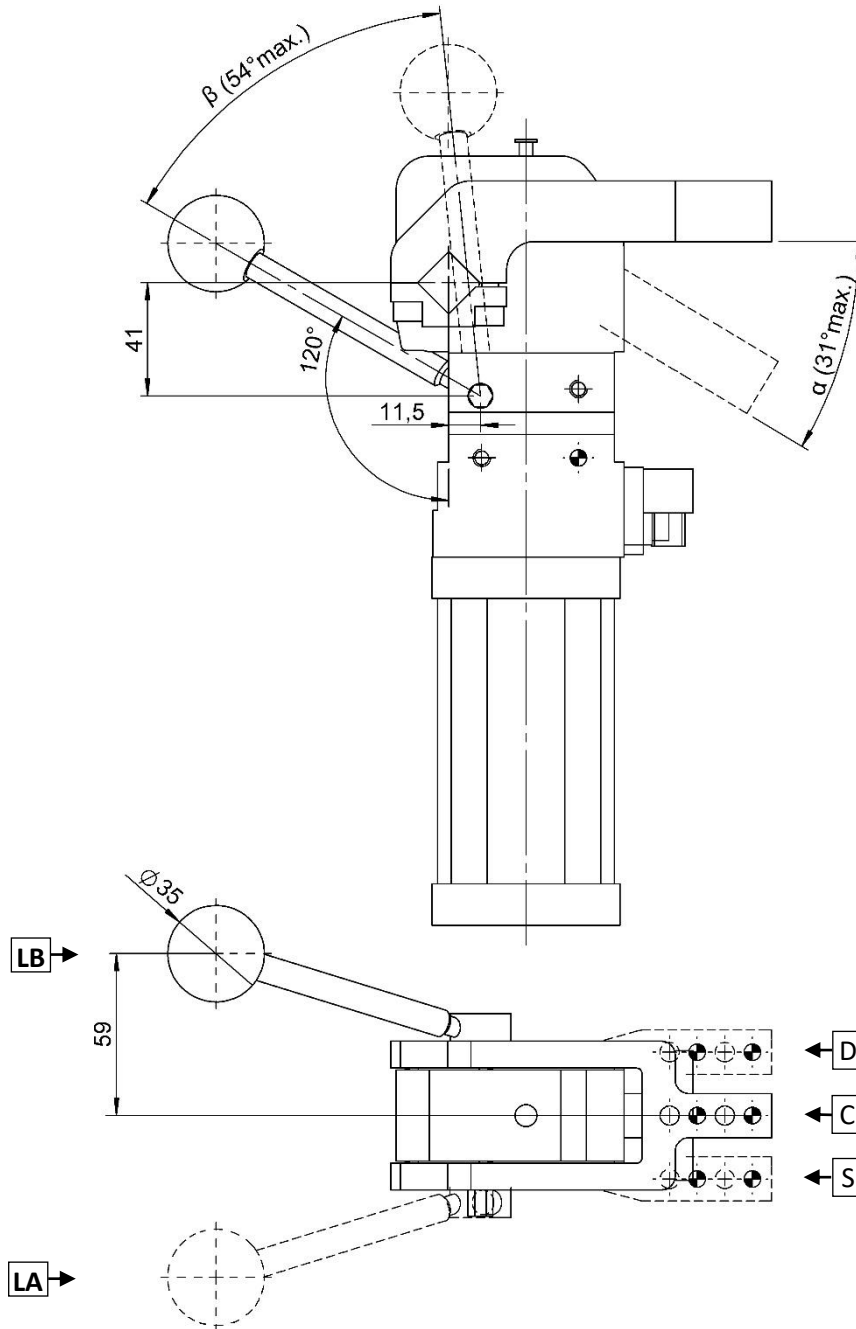
#Tolerances: dowel holes ±0.02, screw holes ±0.1

类型 Type	缸径 Cylinder bore	保持力 Holding moment	重量 Weight	工作气压 Working pressure	最大手动推力 Max. manual force
	[ mm ]	[ Nm ]	[ Kg ]	[ bar ]	[ N ]
CPLM40L...H1...	40	380	~ 2,6	3 - 7	200



## CPLM40L...V1...S

夹紧气缸 D.40, 打开角度可调, 带手动机构, 夹臂垂直对称安装, 高度 15mm  
 Clamp, D.40, Vario Op. Angle, Hand Lever, Vert. Sym., Offset 15



$\alpha$	16°	31°
$\beta$	41°	54°

手柄角度控制按 60°一格调整  
 Manual control adjustable in steps of 60°

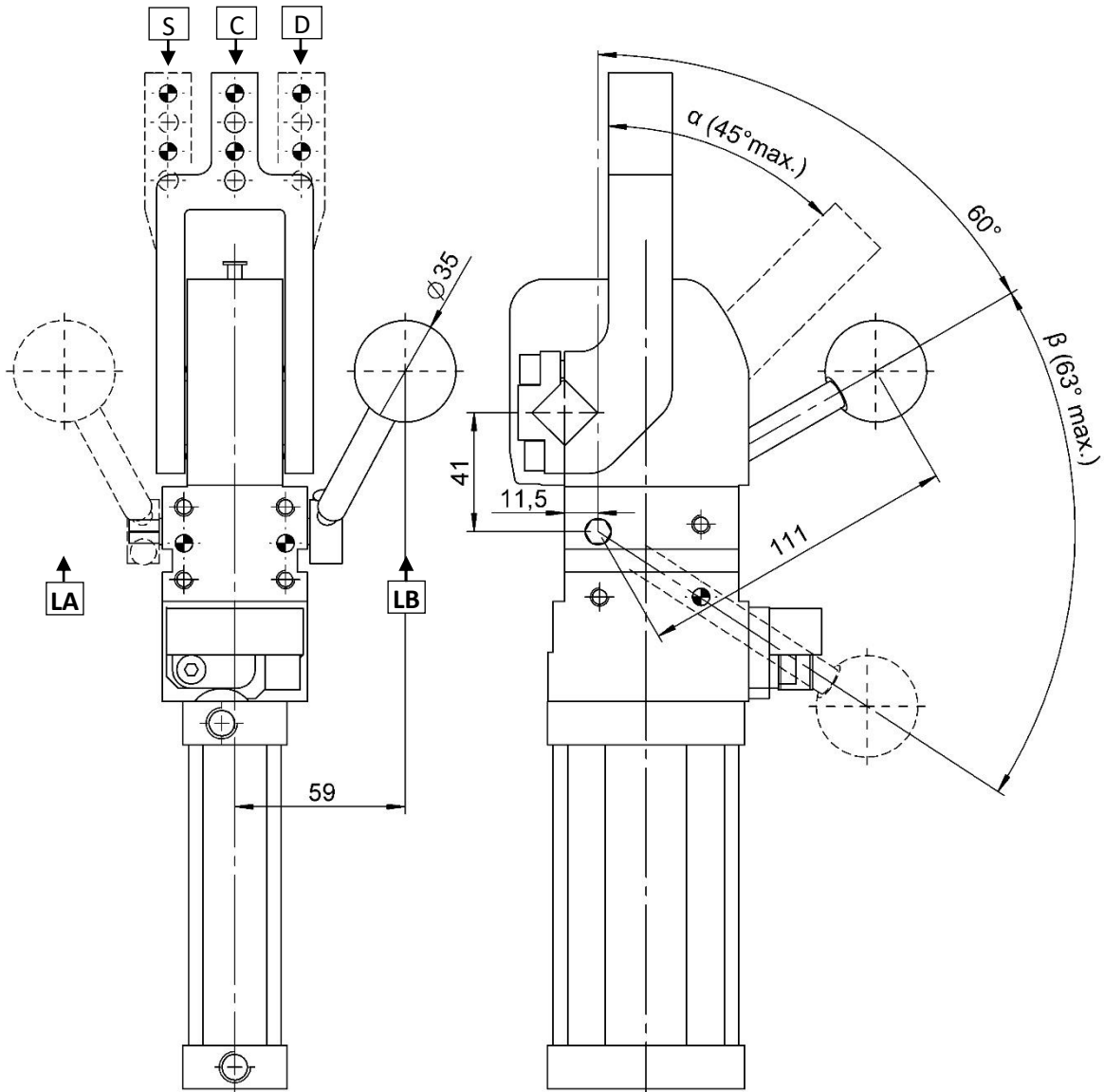
#公差: 定位销孔  $\pm 0.02$ , 螺纹孔  $\pm 0.1$   
 #Tolerances: dowel holes  $\pm 0.02$ , screw holes  $\pm 0.1$

类型 Type	缸径 Cylinder bore	保持力 Holding moment	重量 Weight	工作气压 Working pressure	最大手动推力 Max. manual force
	[ mm ]	[ Nm ]	[ Kg ]	[ bar ]	[ N ]
CPLM40L...V1...S	40	380	~ 2,6	3 - 7	200



## CPLM40L...H1...S

夹紧气缸 D.40, 打开角度可调, 带手动机构, 夹臂水平对称安装, 高度 15mm  
 Clamp, D.40, Vario Op. Angle, Hand Lever, Horiz. Sym., Offset 15



$\alpha$	16°	31°	45°
$\beta$	41°	54°	63°

手柄角度控制按 60°一格调整

Manual control adjustable in steps of 60°

#公差: 定位销孔  $\pm 0.02$ , 螺纹孔  $\pm 0.1$

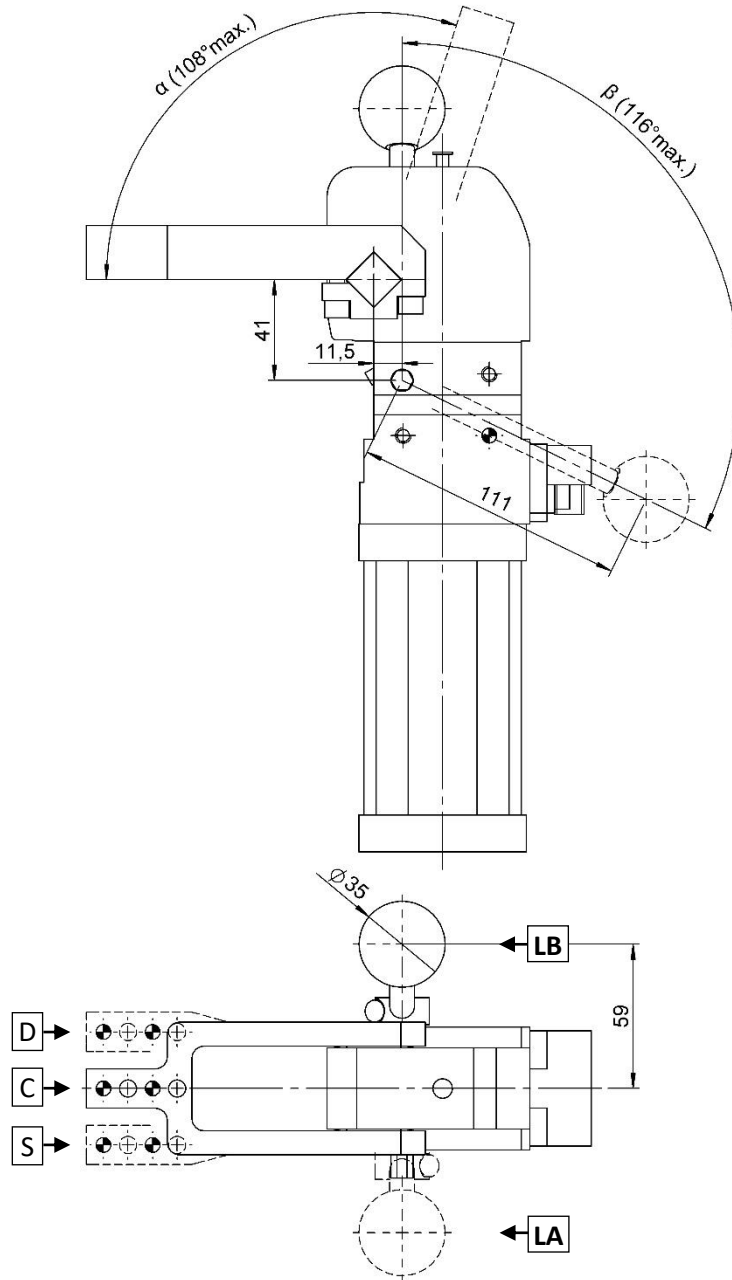
#Tolerances: dowel holes  $\pm 0.02$ , screw holes  $\pm 0.1$

类型 Type	缸径 Cylinder bore	保持力 Holding moment	重量 Weight	工作气压 Working pressure	最大手动推力 Max. manual force
	[ mm ]	[ Nm ]	[ Kg ]	[ bar ]	[ N ]
CPLM40L...H1...S	40	380	~ 2,6	3 - 7	200



## CPLM40L...V2...

夹紧气缸, D.40, 打开角度可调, 带手动机构, 夹臂垂直安装, 高度 0mm  
 Clamp, D.40, Vario Op. Angle, Hand Lever, Vert. arm, Offset 0



$\alpha$	16°	31°	45°	61°	74°	91°	108°
$\beta$	41°	54°	63°	75°	84°	99°	116°

手柄角度控制按 60°一格调整

Manual control adjustable in steps of 60°

#公差: 定位销孔  $\pm 0.02$ , 螺纹孔  $\pm 0.1$

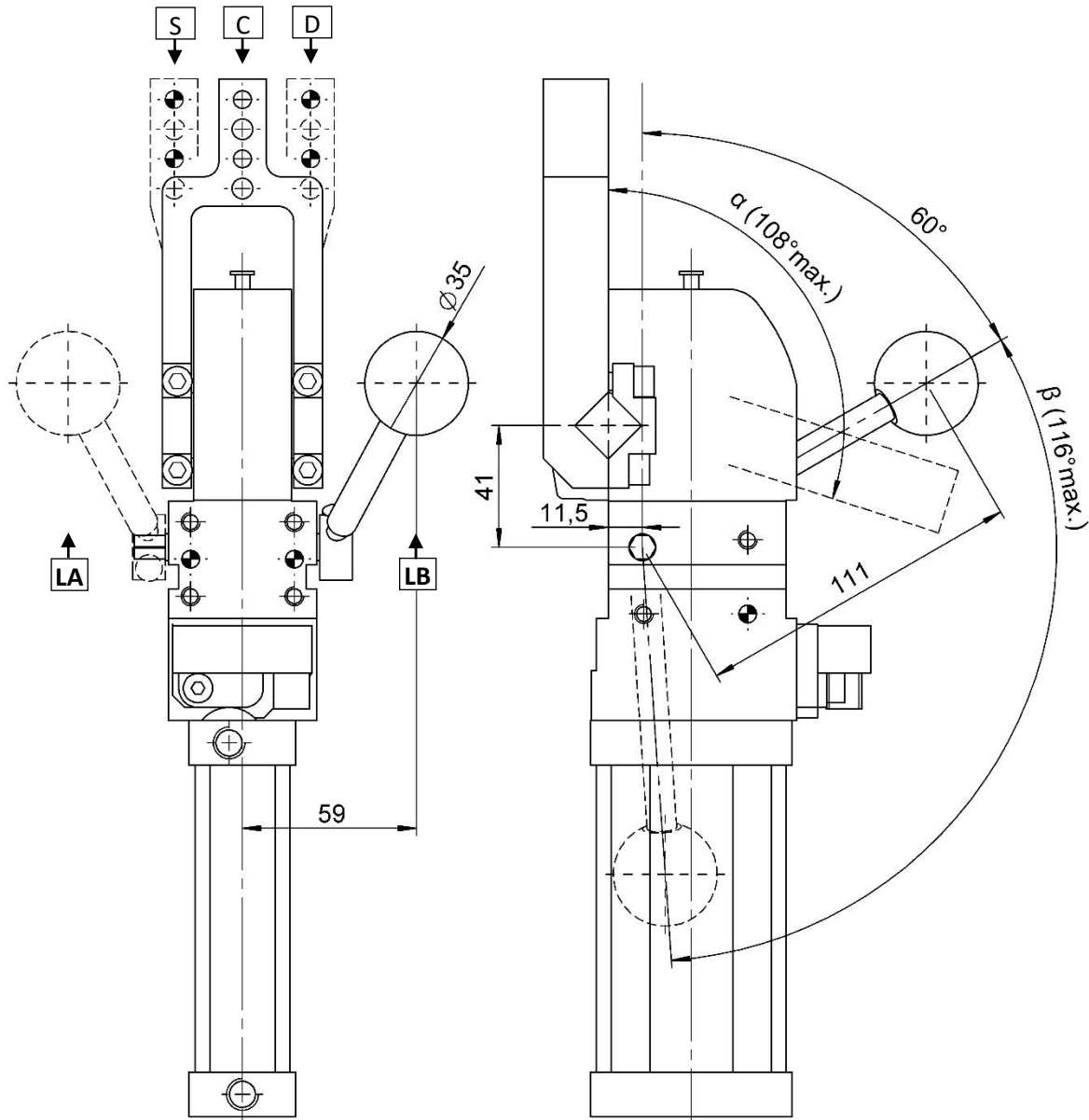
#Tolerances: dowel holes  $\pm 0.02$ , screw holes  $\pm 0.1$

类型 Type	缸径 Cylinder bore	保持力 Holding moment	重量 Weight	工作气压 Working pressure	最大手动推力 Max. manual force
	[ mm ]	[ Nm ]	[ Kg ]	[ bar ]	[ N ]
CPLM40L...V2...	40	380	~ 2.5	3 - 7	200



## CPLM40L...H2...

夹紧气缸, D.40, 打开角度可调, 带手动机构, 夹臂水平安装, 高度 0mm  
 Clamp, D.40, Vario Op. Angle, Hand Lever, Horiz. Arm, Offset 0



$\alpha$	16°	31°	45°	61°	74°	91°	108°
$\beta$	41°	54°	63°	75°	84°	99°	116°

手柄角度控制按 60°一格调整

Manual control adjustable in steps of 60°

#公差: 定位销孔  $\pm 0.02$ , 螺纹孔  $\pm 0.1$

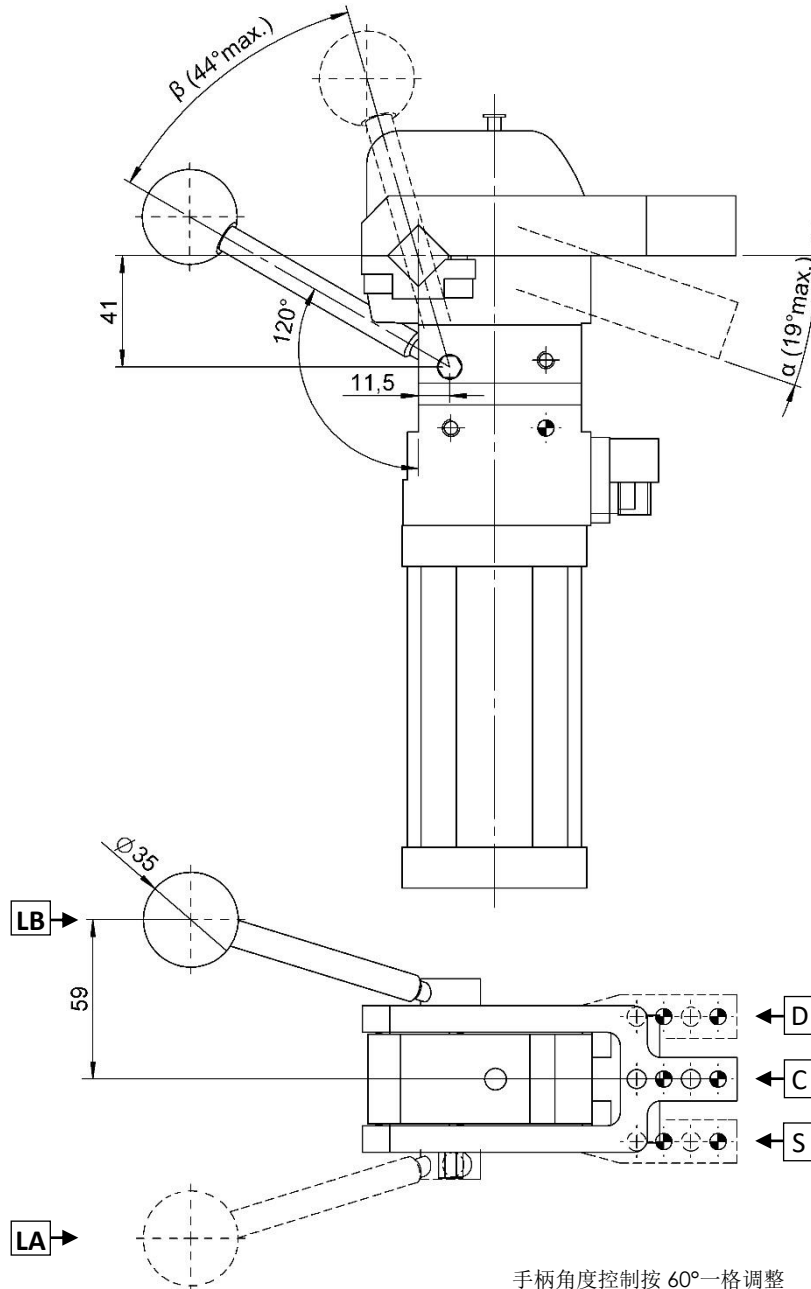
#Tolerances: dowel holes  $\pm 0.02$ , screw holes  $\pm 0.1$

类型 Type	缸径 Cylinder bore	保持力 Holding moment	重量 Weight	工作气压 Working pressure	最大手动推力 Max. manual force
	[ mm ]	[ Nm ]	[ Kg ]	[ bar ]	[ N ]
CPLM40L...H2...	40	380	~ 2.5	3 - 7	200



## CPLM40L...V2...S

夹紧气缸 D.40, 打开角度可调, 带手动机构, 夹臂垂直对称安装, 高度 0mm  
 Clamp, D.40, Vario Op. Angle, Hand Lever, Vert. Sym., Offset 0



$\alpha$	19°
$\beta$	44°

手柄角度控制按 60°一格调整  
 Manual control adjustable in steps of 60°

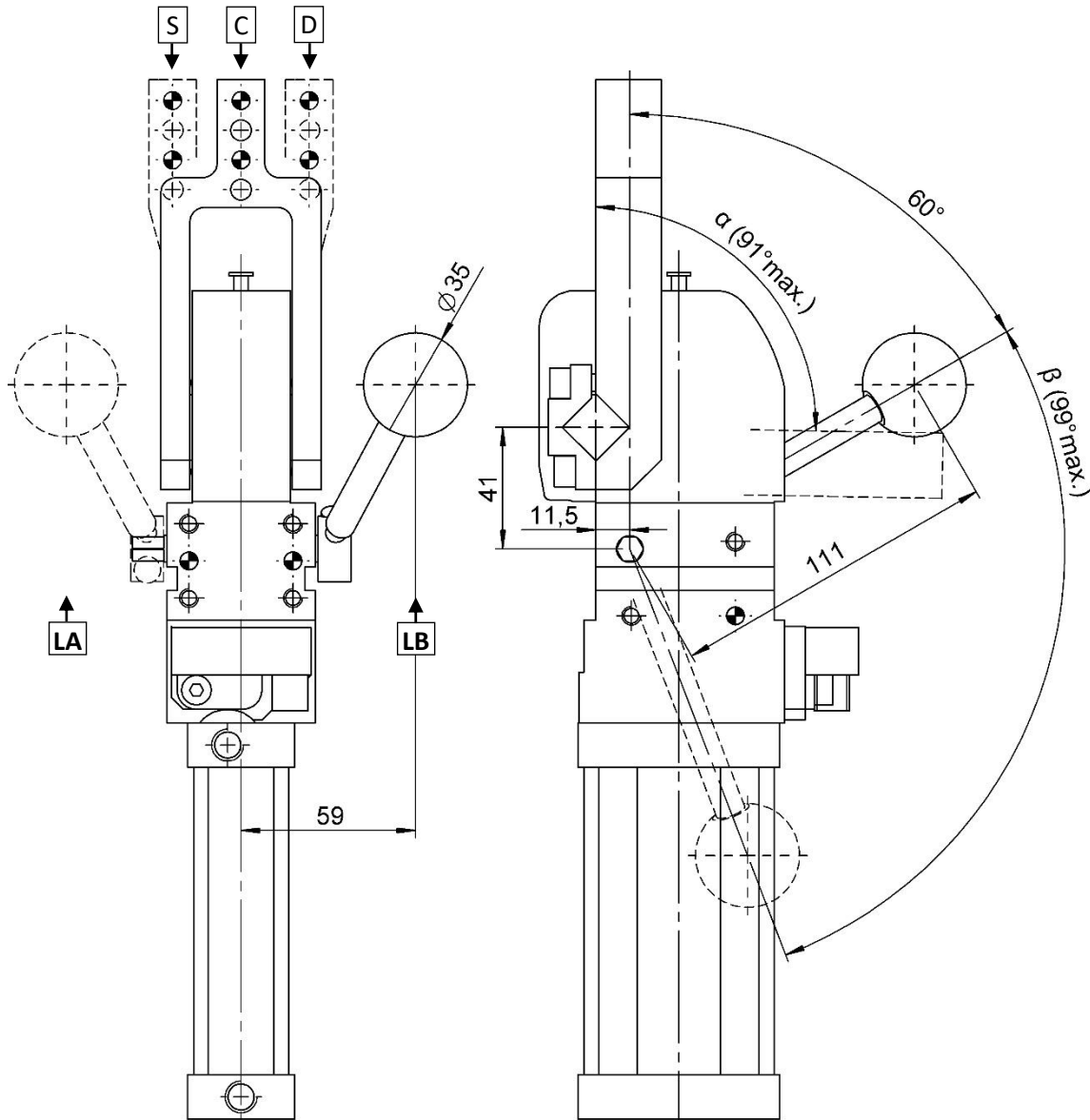
#公差: 定位销孔  $\pm 0.02$ , 螺纹孔  $\pm 0.1$   
 #Tolerances: dowel holes  $\pm 0.02$ , screw holes  $\pm 0.1$

类型 Type	缸径 Cylinder bore	保持力 Holding moment	重量 Weight	工作气压 Working pressure	最大手动推力 Max. manual force
	[ mm ]	[ Nm ]	[ Kg ]	[ bar ]	[ N ]
CPLM40L...V2...S	40	380	~ 2.5	3 - 7	200



## CPLM40L...H2...S

夹紧气缸 D.40, 打开角度可调, 带手动机构, 夹臂水平对称安装, 高度 0mm  
 Clamp, D.40, Vario Op. Angle, Hand Lever, Horiz. Sym., Offset 0



$\alpha$	16°	31°	45°	61°	74°	91°
$\beta$	41°	54°	63°	75°	84°	99°

手柄角度控制按 60°一格调整

Manual control adjustable in steps of 60°

#公差: 定位销孔±0.02, 螺纹孔±0.1

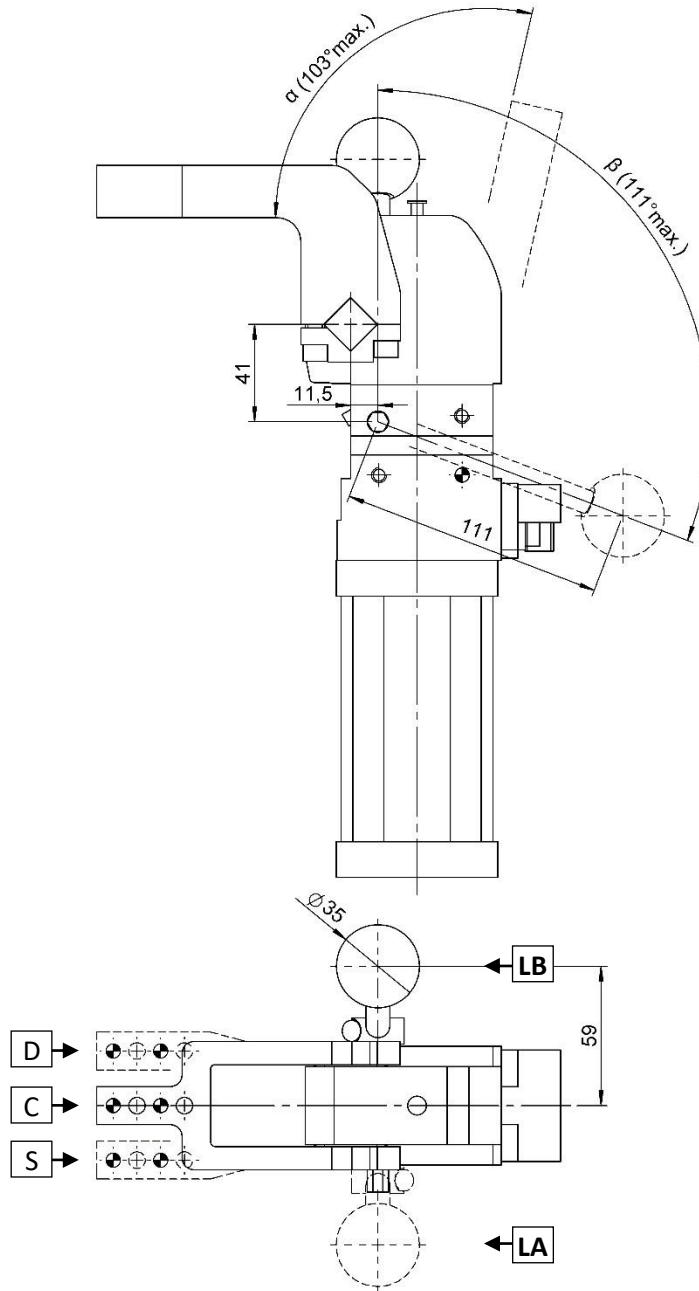
#Tolerances: dowel holes ±0.02, screw holes ±0.1

类型 Type	缸径 Cylinder bore	保持力 Holding moment	重量 Weight	工作气压 Working pressure	最大手动推力 Max. manual force
	[ mm ]	[ Nm ]	[ Kg ]	[ bar ]	[ N ]
CPLM40L...H2...S	40	380	~ 2.5	3 - 7	200



## CPLM40L...V3...

夹紧气缸 D.40, 打开角度可调, 带手动机构, 垂直安装, 高度 45mm  
 Clamp, D.40, Vario Op. Angle, Hand Lever, Vert. arm, Offset 45



$\alpha$	16°	31°	45°	61°	74°	91°	103°
$\beta$	41°	54°	63°	75°	84°	99°	111°

手柄角度控制按 60°一格调整  
 Manual control adjustable in steps of 60°

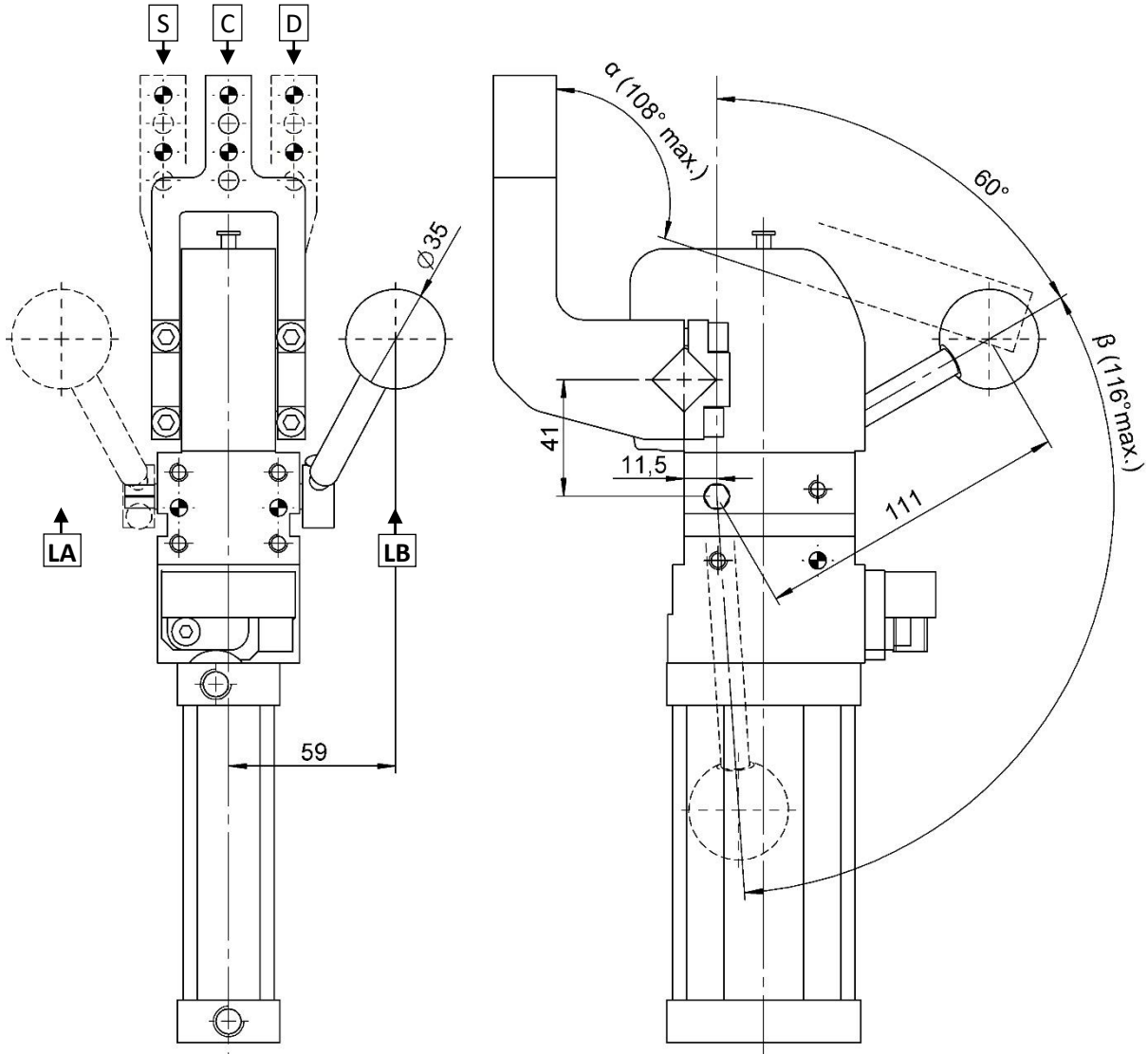
#公差: 定位销孔 $\pm 0.02$ , 螺纹孔 $\pm 0.1$   
 #Tolerances: dowel holes  $\pm 0.02$ , screw holes  $\pm 0.1$

类型 Type	缸径 Cylinder bore	保持力 Holding moment	重量 Weight	工作气压 Working pressure	最大手动推力 Max. manual force
	[ mm ]	[ Nm ]	[ Kg ]	[ bar ]	[ N ]
CPLM40L...V3...	40	380	~ 2.7	3 - 7	200



## CPLM40L...H3...

夹紧气缸 D.40, 打开角度可调, 带手动机构, 水平安装, 高度 45mm  
 Clamp, D.40, Vario Op. Angle, Hand Lever, Horiz. Arm, Offset 45



$\alpha$	16°	31°	45°	61°	74°	91°	108°
$\beta$	41°	54°	63°	75°	84°	99°	116°

手柄角度控制按 60°一格调整  
 Manual control adjustable in steps of 60°

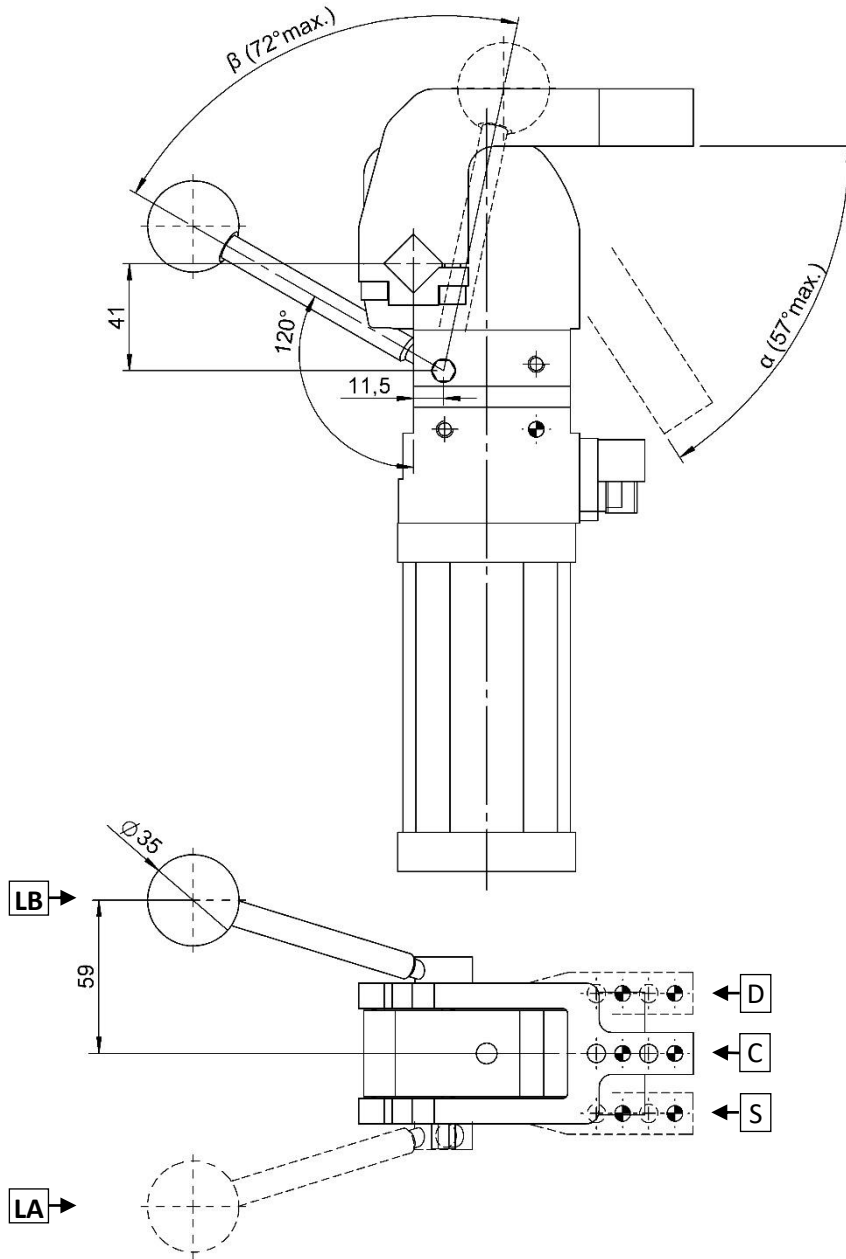
#公差: 定位销孔  $\pm 0.02$ , 螺纹孔  $\pm 0.1$   
 #Tolerances: dowel holes  $\pm 0.02$ , screw holes  $\pm 0.1$

类型 Type	缸径 Cylinder bore	保持力 Holding moment	重量 Weight	工作气压 Working pressure	最大手动推力 Max. manual force
	[ mm ]	[ Nm ]	[ Kg ]	[ bar ]	[ N ]
CPLM40L...H3...	40	380	~ 2.7	3 - 7	200



## CPLM40L...V3...S

夹紧气缸, D.40, 打开角度可调, 带手动机构, 垂直对称安装, 高度 45mm  
 Clamp, D.40, Vario Op. Angle, Hand Lever, Vert. Sym., Offset 45



$\alpha$	16°	31°	45°	57°
$\beta$	41°	54°	63°	72°

手柄角度控制按 60°一格调整

Manual control adjustable in steps of 60°

#公差: 定位销孔  $\pm 0.02$ , 螺纹孔  $\pm 0.1$

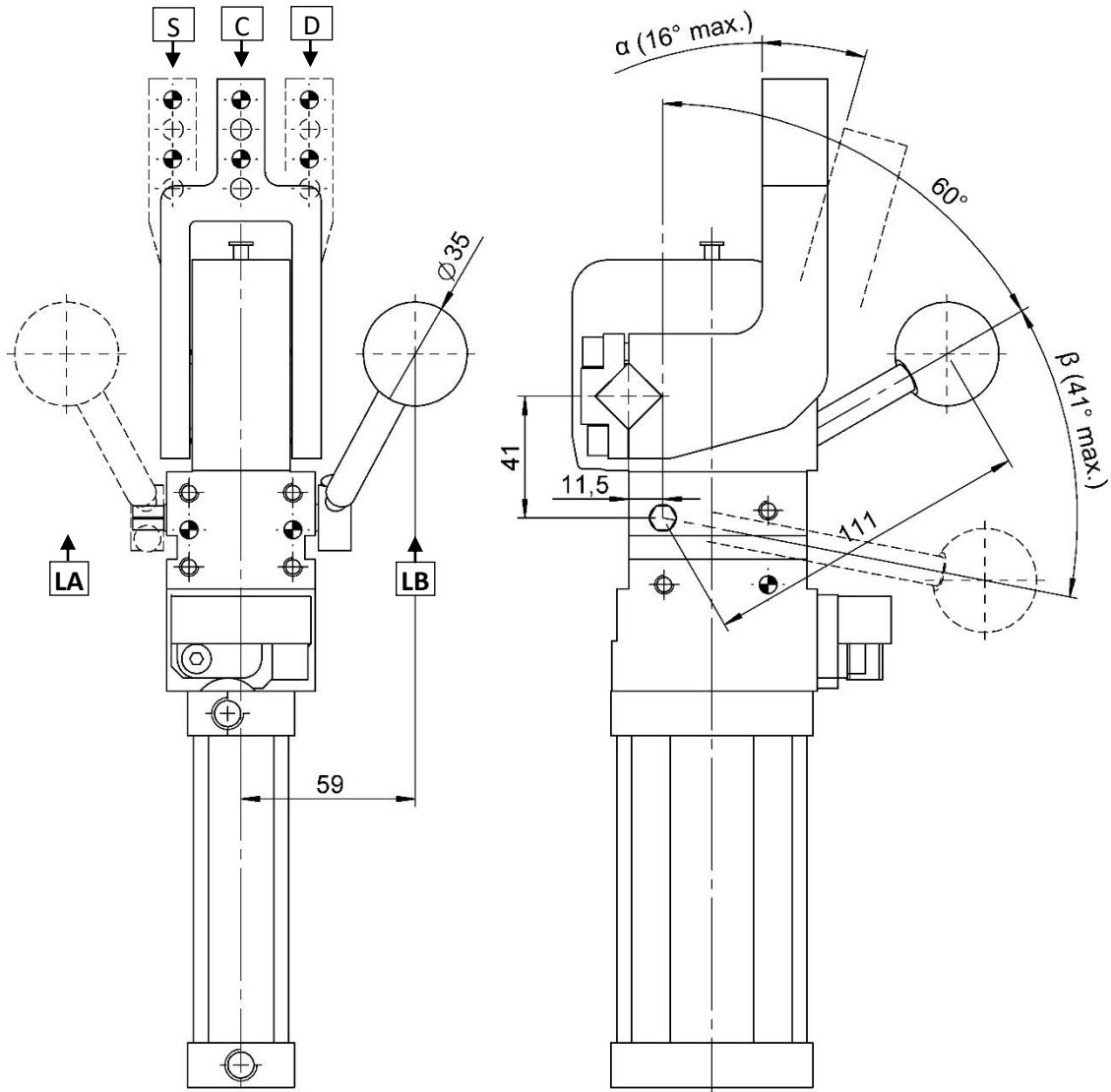
#Tolerances: dowel holes  $\pm 0.02$ , screw holes  $\pm 0.1$

类型 Type	缸径 Cylinder bore	保持力 Holding moment	重量 Weight	工作气压 Working pressure	最大手动推力 Max. manual force
	[ mm ]	[ Nm ]	[ Kg ]	[ bar ]	[ N ]
CPLM40L...V3...S	40	380	~ 2.7	3 - 7	200



## CPLM40L...H3...S

夹紧气缸 D.40, 打开角度可调, 带手动机构, 水平对称安装, 高度 45mm  
 Clamp, D.40, Vario Op. Angle, Hand Lever, Horiz. Sym., Offset 45



$\alpha$	16°
$\beta$	41°

手柄角度控制按 60°一格调整  
 Manual control adjustable in steps of 60°

#公差: 定位销孔  $\pm 0.02$ , 螺纹孔  $\pm 0.1$   
 #Tolerances: dowel holes  $\pm 0.02$ , screw holes  $\pm 0.1$

类型 Type	缸径 Cylinder bore	保持力 Holding moment	重量 Weight	工作气压 Working pressure	最大手动推力 Max. manual force
	[ mm ]	[ Nm ]	[ Kg ]	[ bar ]	[ N ]
CPLM40L...H3...S	40	380	~ 2.7	3 - 7	200

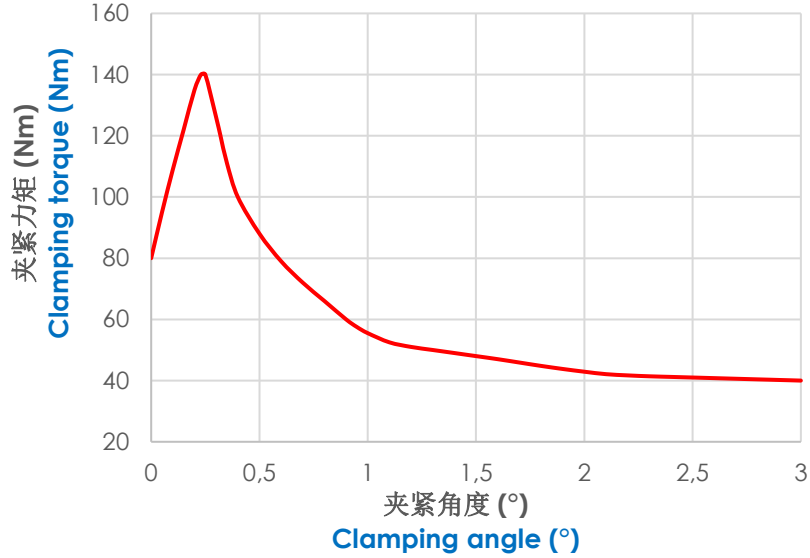


图表.

## Diagrams.

夹紧力矩 (Nm)

Clamping torque (Nm)

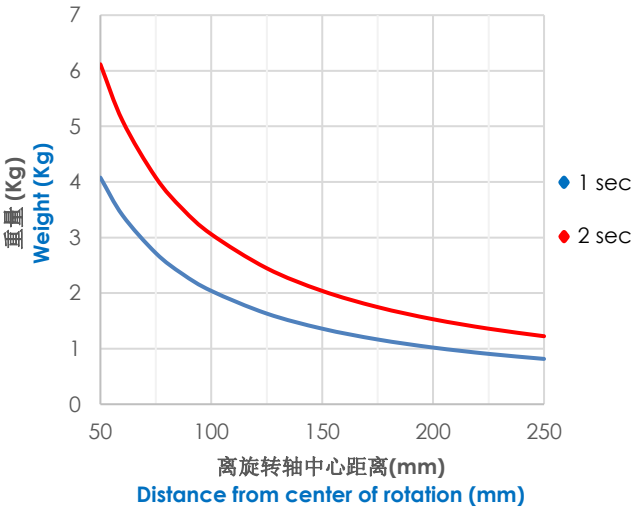


最大夹紧力矩(5 bar): **140 Nm.**

Max. clamping torque (5 bar): **140 Nm.**

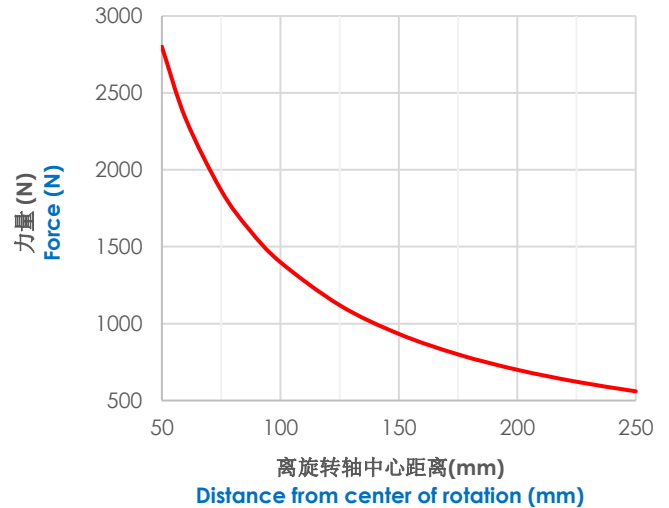
5bar 气压 夹臂最大承受负载 (Kg).

Max. load applicable on the arm (Kg) at 5 bar.



5bar 气压最大承受力 (N).

Max. force applied (N) at 5 bar.



类型 Type	最大重量力矩 Max. torque By weight [Nm]		最大偏心力矩 The max torque for applications with the load out of axis [Nm]	
	1 sec	2 sec	1 sec	2 sec
CPL 40	2.0	3.0	1.6	2.4



## M12 电感式接近开关示意图(cod. 09538/.../C).

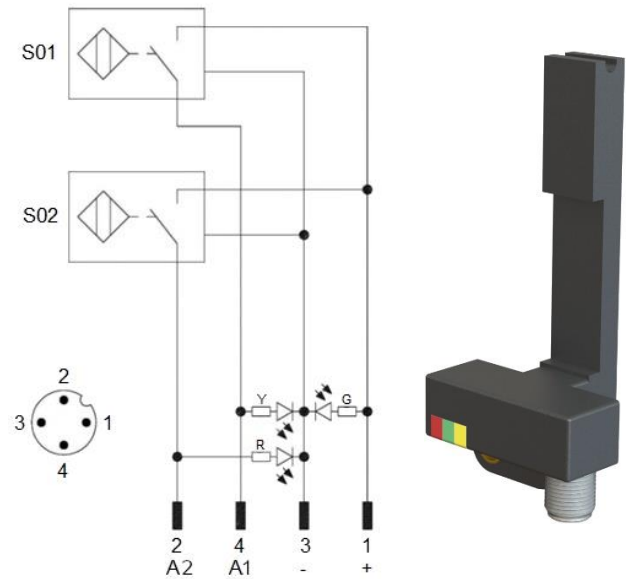
### Diagram for M12 inductive proximity switch (cod. 09538/.../C).

技术参数：

- 输出类型: PNP;
- 输入电压: 10-30 VDC;
- 最大换向电流: 150 mA;
- 耗电流: < 20 mA;
- 电压差: <1,8 V
- 工作温度: -25° / 70° C.

Technical data:

- Output type: PNP;
- Feeding voltage: 10-30 VDC;
- Max. commutating current: 150 mA;
- Power supply: < 20 mA;
- Voltage drop: < 1,8 V;
- Temperature range: -25° / 70° C.



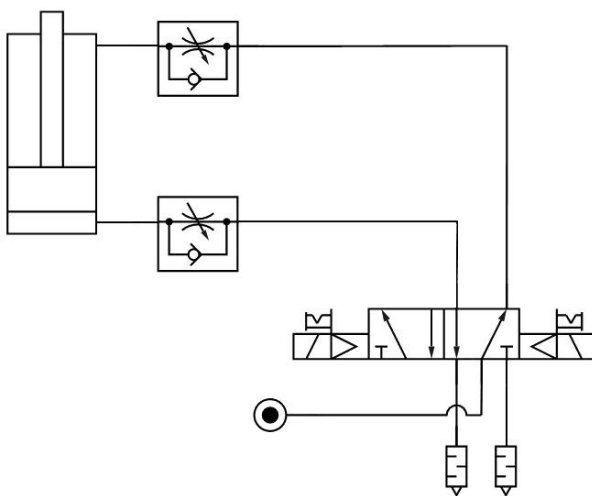
S01 = 打开信号  
S01 = opening signal  
S02 = 关闭信号  
S02 = closing signal

Y = 黄色 LED / yellow LED  
G = 绿色 LED / green LED  
R = 红色 LED / red LED

1 = 棕色线 / brown wire  
2 = 黑色线 / black wire  
3 = 蓝色线 / blue wire  
4 = 白色线 / white wire

## 气路图.

### Pneumatic plan.



cilindro pneumatico pneumatic cylinder	pos. chiusura closed pos.							
	pos.apertura open pos.							
segnale pos. apertura open pos. signal	1							
	0							
segnale pos. chiusura closed pos. signal	1							
	0							



## 操作说明.

### Operating instructions.

#### 调整打开角度.

- 让夹臂处于打开状态; 松开 M6 螺丝并且拆下放大器; (图. 1)
- 卸下传感器下面的 M5 插口螺丝; (图. 2)
- 插入最大  $\varnothing 4$  的六角扳手, 推压弹簧, 施力 $\geq 100\text{N}$ ; (图.3)
- 保持压住弹簧的状态, 手动移动夹臂位置到需要的角度;
- 释放弹簧让组件自动耦合.

#### Opening angle change.

- Bring the clamp in the opening position; Unscrew the M6 screw and remove the amplifier (Image 1)
- Unscrew the M5 socket screw below the inductive sensor; (Image 2)
- Put a key with  $\varnothing$  max. 4 mm into the hole, and push the spring applying a force  $\geq 100\text{ N}$ ; (Image 3)
- Keep pushing on the spring and move the clamp arm manually to the desired position;
- Release the spring to allow the automatic coupling of the components.

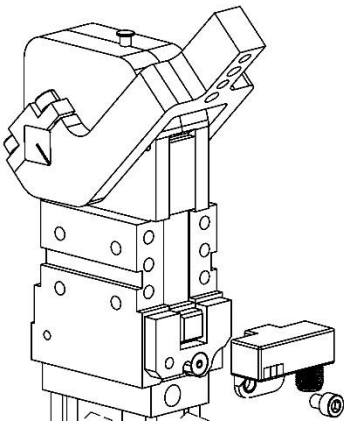


图 1

Image 1

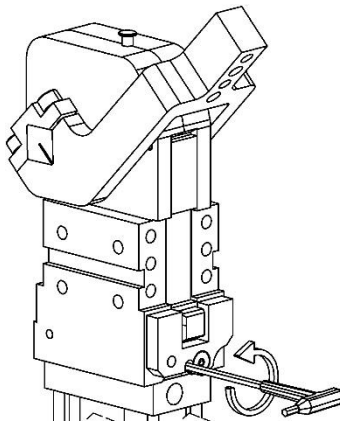


图 2

Image 2

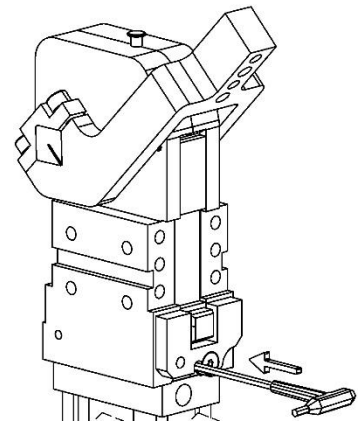


图 3

Image 3

#### 打开角度.

#### Opening angle.

类型 Type	打开角度 CPL40 / Opening angles CPL40																																				
	2	4	6	8	10	13	16	19	23	27	31	35	39	45	48	53	57	61	66	70	74	79	83	87	91	95	99	103	108	112	117	122	127	135			
V1...	•	•	•	•	•	•	•	•	•	•	•	•	•	•	•	•	•	•	•	•	•	•	•	•	•	•	•	•	•	•	•	•	•	•	•	•	
H1...	•	•	•	•	•	•	•	•	•	•	•	•	•	•	•	•	•	•	•	•	•	•	•	•	•	•	•	•	•	•	•	•	•	•	•	•	
V1...S	•	•	•	•	•	•	•	•	•	•	•	•	•	•	•	•	•	•	•	•	•	•	•	•	•	•	•	•	•	•	•	•	•	•	•	•	
H1...S	•	•	•	•	•	•	•	•	•	•	•	•	•	•	•	•	•	•	•	•	•	•	•	•	•	•	•	•	•	•	•	•	•	•	•	•	
V2...	•	•	•	•	•	•	•	•	•	•	•	•	•	•	•	•	•	•	•	•	•	•	•	•	•	•	•	•	•	•	•	•	•	•	•	•	
H2...	•	•	•	•	•	•	•	•	•	•	•	•	•	•	•	•	•	•	•	•	•	•	•	•	•	•	•	•	•	•	•	•	•	•	•	•	
V2...S	•	•	•	•	•	•	•	•	•	•	•	•	•	•	•	•	•	•	•	•	•	•	•	•	•	•	•	•	•	•	•	•	•	•	•	•	•
H2...S	•	•	•	•	•	•	•	•	•	•	•	•	•	•	•	•	•	•	•	•	•	•	•	•	•	•	•	•	•	•	•	•	•	•	•	•	•
V3...	•	•	•	•	•	•	•	•	•	•	•	•	•	•	•	•	•	•	•	•	•	•	•	•	•	•	•	•	•	•	•	•	•	•	•	•	•
H3...	•	•	•	•	•	•	•	•	•	•	•	•	•	•	•	•	•	•	•	•	•	•	•	•	•	•	•	•	•	•	•	•	•	•	•	•	•
V3...S	•	•	•	•	•	•	•	•	•	•	•	•	•	•	•	•	•	•	•	•	•	•	•	•	•	•	•	•	•	•	•	•	•	•	•	•	•
H3...S	•	•	•	•	•	•	•	•	•	•	•	•	•	•	•	•	•	•	•	•	•	•	•	•	•	•	•	•	•	•	•	•	•	•	•	•	•

类型 Type	打开角度 CPLM40 / Opening angles CPLM40																																					
	2	4	6	8	10	13	16	19	23	27	31	35	39	45	48	53	57	61	66	70	74	79	83	87	91	95	99	103	108									
V1...	•	•	•	•	•	•	•	•	•	•	•	•	•	•	•	•	•	•	•	•	•	•	•	•	•	•	•	•	•	•	•	•	•	•	•	•		
H1...	•	•	•	•	•	•	•	•	•	•	•	•	•	•	•	•	•	•	•	•	•	•	•	•	•	•	•	•	•	•	•	•	•	•	•	•		
V1...S	•	•	•	•	•	•	•	•	•	•	•	•	•	•	•	•	•	•	•	•	•	•	•	•	•	•	•	•	•	•	•	•	•	•	•	•	•	
H1...S	•	•	•	•	•	•	•	•	•	•	•	•	•	•	•	•	•	•	•	•	•	•	•	•	•	•	•	•	•	•	•	•	•	•	•	•	•	
V2...	•	•	•	•	•	•	•	•	•	•	•	•	•	•	•	•	•	•	•	•	•	•	•	•	•	•	•	•	•	•	•	•	•	•	•	•	•	
H2...	•	•	•	•	•	•	•	•	•	•	•	•	•	•	•	•	•	•	•	•	•	•	•	•	•	•	•	•	•	•	•	•	•	•	•	•	•	
V2...S	•	•	•	•	•	•	•	•	•	•	•	•	•	•	•	•	•	•	•	•	•	•	•	•	•	•	•	•	•	•	•	•	•	•	•	•	•	•
H2...S	•	•	•	•	•	•	•	•	•	•	•	•	•	•	•	•	•	•	•	•	•	•	•	•	•	•	•	•	•	•	•	•	•	•	•	•	•	•
V3...	•	•	•	•	•	•	•	•	•	•	•	•	•	•	•	•	•	•	•	•	•	•	•	•	•	•	•	•	•	•	•	•	•	•	•	•	•	•
H3...	•	•	•	•	•	•	•	•	•	•	•	•	•	•	•	•	•	•	•	•	•	•	•	•	•	•	•	•	•	•	•	•	•	•	•	•	•	•
V3...S	•	•	•	•	•	•	•	•	•	•	•	•	•	•	•	•	•	•	•	•	•	•	•	•	•	•	•	•	•	•	•	•	•	•	•	•	•	•
H3...S	•	•	•	•	•	•	•	•	•	•	•	•	•	•	•	•	•	•	•	•	•	•	•	•	•	•	•	•	•	•	•	•	•	•	•	•	•	•






备件.

## Spare parts.

配套元件 # Kit	图片 Picture	描述 Description	代号 Article
夹臂总成 Arm assembly		夹臂高度 15mm <b>V1C / H1C / V1CS / H1CS</b> Arm offset 15mm <b>V1C / H1C / V1CS / H1CS</b>	<b>09554/C</b>
		夹臂高度 15mm <b>V1D / H1S / V1SS / H1DS</b> Arm offset 15mm <b>V1D / H1S / V1SS / H1DS</b>	<b>09554/DX/C</b>
		夹臂高度 15mm <b>V1S / H1D / V1DS / H1SS</b> Arm offset 15mm <b>V1S / H1D / V1DS / H1SS</b>	<b>09554/SX/C</b>
		夹臂高度 0mm <b>V2C / H2C / V2CS / H2CS</b> Arm offset 0mm <b>V2C / H2C / V2CS / H2CS</b>	<b>09555/C</b>
		夹臂高度 0mm <b>V2D / H2S / V2SS / H2DS</b> Arm offset 0mm <b>V2D / H2S / V2SS / H2DS</b>	<b>09555/DX/C</b>
		夹臂高度 0mm <b>V2S / H2D / V2DS / H2SS</b> Arm offset 0mm <b>V2S / H2D / V2DS / H2SS</b>	<b>09555/SX/C</b>
		夹臂高度 45mm <b>V3C / H3C / V3CS / H3CS</b> Arm offset 45mm <b>V3C / H3C / V3CS / H3CS</b>	<b>09556/C</b>
		夹臂高度 45mm <b>V3D / H3S / V3SS / H3DS</b> Arm offset 45mm <b>V3D / H3S / V3SS / H3DS</b>	<b>09556/DX/C</b>
		夹臂高度 45mm <b>V3S / H3D / V3DS / H3SS</b> Arm offset 45mm <b>V3S / H3D / V3DS / H3SS</b>	<b>09556/SX/C</b>
接近开关 Proximity switch		VEP 完整电感式接近开关 (0°) 用于 CPL40 Inductive proximity switch VEP (0°) for CPL40	<b>09538/1/C</b>
		VEP 完整电感式接近开关 (0°) 用于 CPLM40 Inductive proximity switch VEP (0°) for CPLM40	<b>09538/M1/C</b>
		VEP 完整电感式接近开关 (90°) 用于 CPL40 Inductive proximity switch VEP (90°) for CPL40	<b>09538/2/C</b>
		VEP 完整电感式接近开关 (90°) 用于 CPLM40 Inductive proximity switch VEP (90°) for CPLM40	<b>09538/M2/C</b>
传感器支架 Sensor bar		传感器支架用于 CPL40 Sensor satellite bar for CPL40	<b>09538</b>
		传感器支架用于 CPLM40 Sensor satellite bar for CPLM40	<b>09538/M</b>
传感器放大器 Sensor amplifier		传感器放大器带 M12 连接 0° Power sensor amplifier M12 connector 0°	<b>3/436</b>
		传感器放大器带 M12 连接 90° Power sensor amplifier M12 connector 90°	<b>3/437</b>



<p><b>密封套装</b> Seals kit</p>		<p>用于气缸的密封组件 Seal components for pneumatic cylinder</p>	<p><b>SCR-CPL40</b></p>
<p><b>气缸</b> Pneumatic cylinder</p>		<p>CPL40 完整气缸 Complete pneumatic cylinder for CPL40</p>	<p><b>09506/C</b></p>
		<p>CPLM40 完整气缸 Complete pneumatic cylinder for CPLM40</p>	<p><b>09506/M/C</b></p>
<p><b>手柄</b> Manual control lever</p>		<p>夹紧气缸CPLM 手柄 Lever manual control pneumatic clamp CPLM...</p>	<p><b>09733/C</b></p>

.....

.....

.....

.....

.....

.....

.....

.....

.....

本目录取消并替换了以前的目录。我们保留在没有任何通知的情况下进行添加或更改的权利。目录中的产品为标准产品；对特殊应用的任何请求都由技术/商务部门进行评估。本目录文档均属 VEP Automation S.r.l. 所有。未经授权许可，禁止任何形式的复制。

This catalogue cancels and replaces the previous ones. We reserve the right to make additions or changes without any notice. The products in the catalogue are standard; any enquiry of special applications is evaluated by technical/sales department. The complete documentation belongs to VEP Automation S.r.l. and without permission any kind of reproduction is forbidden.

**VEP Automation Headquarters**

**VEP Automation S.r.l**  
Via San Felice, 37  
10092 Beinasco – Torino (Italy)  
Tel. +39 011 3972572  
Email: [info@vepautomation.it](mailto:info@vepautomation.it)  
Web: [www.vepautomation.it](http://www.vepautomation.it)

**VEP Automation Germany**

**VEP Automation GmbH**  
Fritz Liebsch Str. 29  
D 26723 Emden (Germany)  
Tel. +49 04921 450758  
Email: [info@vepautomation.de](mailto:info@vepautomation.de)  
Web: [www.vepautomation.de](http://www.vepautomation.de)

**VEP Automation America**

**VEP Automation S.A.**  
Av. Toluca 373 M Col. Olivar de los  
Padres Del. Álvaro Obregón  
01780 CDMX – (Ciudad de México)  
Tel. +52 55 1718 0929  
Email: [info@vepautomation.mx](mailto:info@vepautomation.mx)  
Web: [www.vepautomation.mx](http://www.vepautomation.mx)

**VEP Automation China**

**维亿普自动化（苏州）有限公司**  
地址: 中国江苏省苏州市吴中区木渎镇  
木东路 317 号（联东 U 谷）1 幢 401 室  
Room 401, Building No 1, No 317, mudong Road,  
Wuzhong, mudu District, Suzhou City (China)  
电话. +86 512 6729 2226  
邮箱: [info@vepautomation.cn](mailto:info@vepautomation.cn)  
网址: [www.vepautomation.cn](http://www.vepautomation.cn)